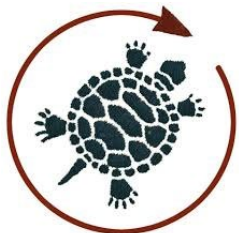
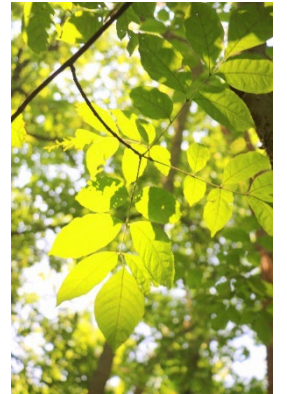


Teaneck Creek Habitat Restoration

Project Update Planting Update

February 16, 2022



PROJECT GOALS

- Enhance the site's natural resources
- Increase biodiversity
- Mitigate erosive forces of stormwater throughout the site
- Improve public access and visitor experience
- Improve community health and well-being
- Educate the public about the park's habitat and ecology

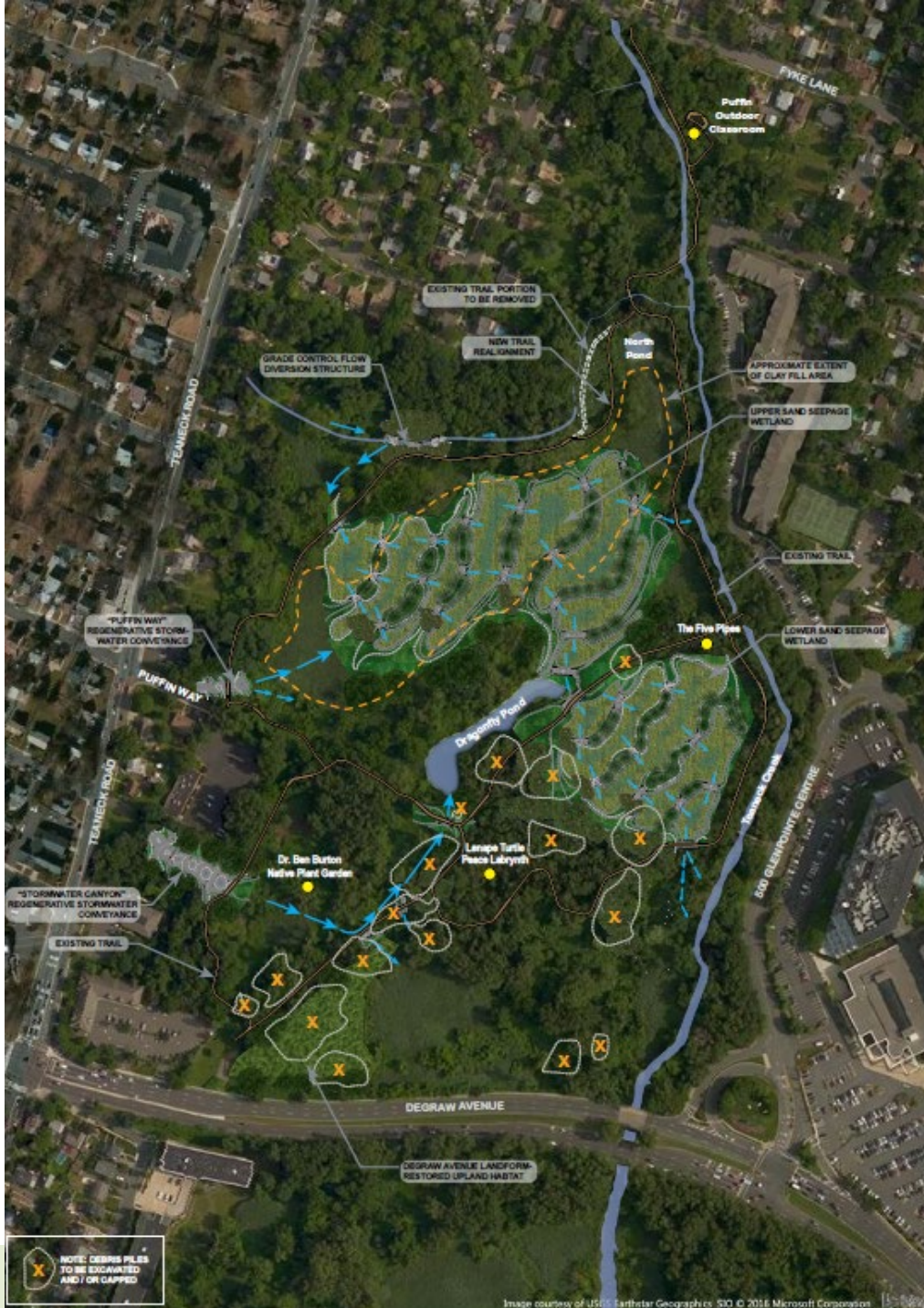


PROJECT METRICS

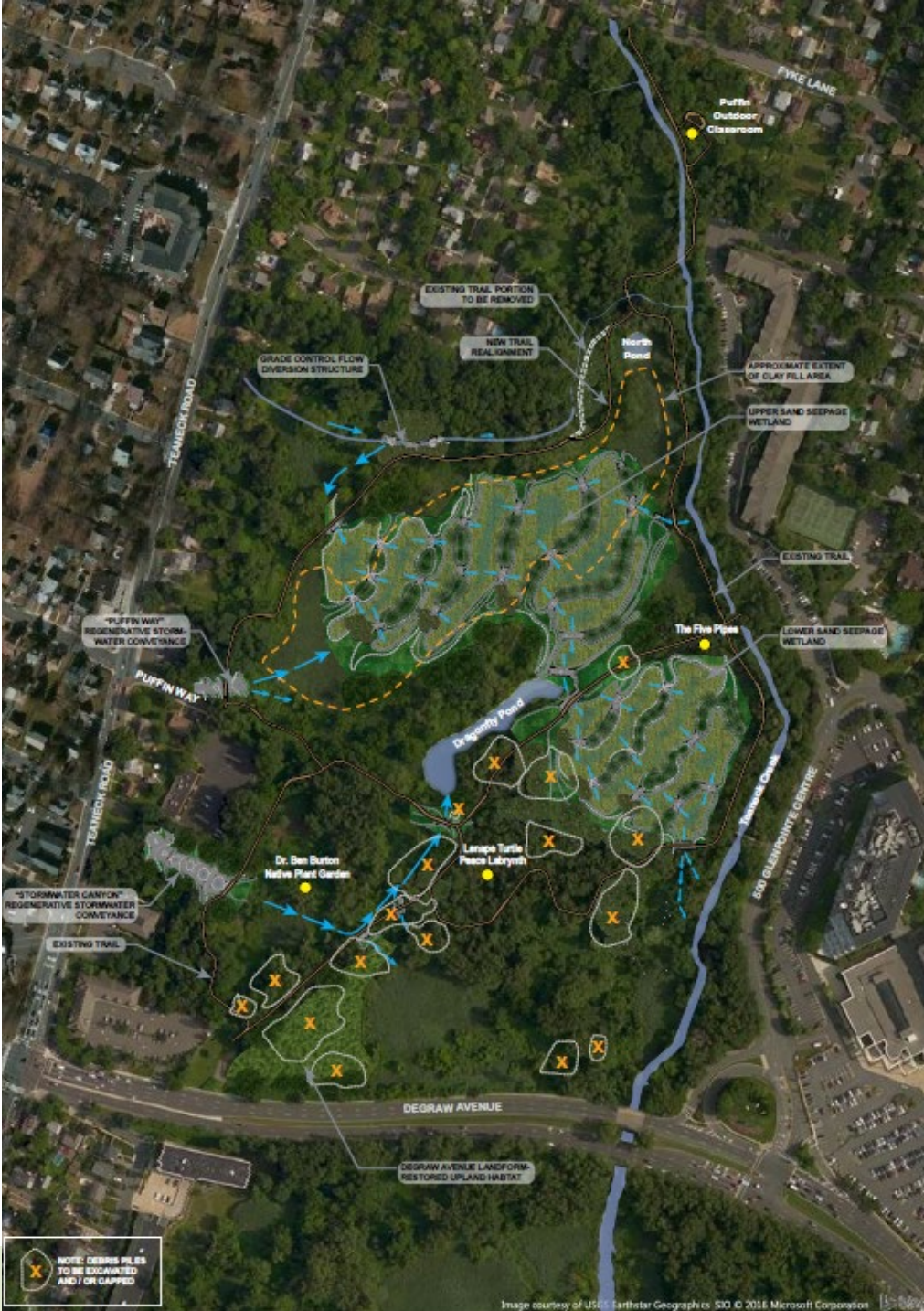
- Over 20 acres of habitat restoration
- 430 linear feet of stormwater channel restoration
- 300 linear feet of trail realignment
- 16 debris piles removed or capped



PROJECT PLANS



PROJECT PLANS



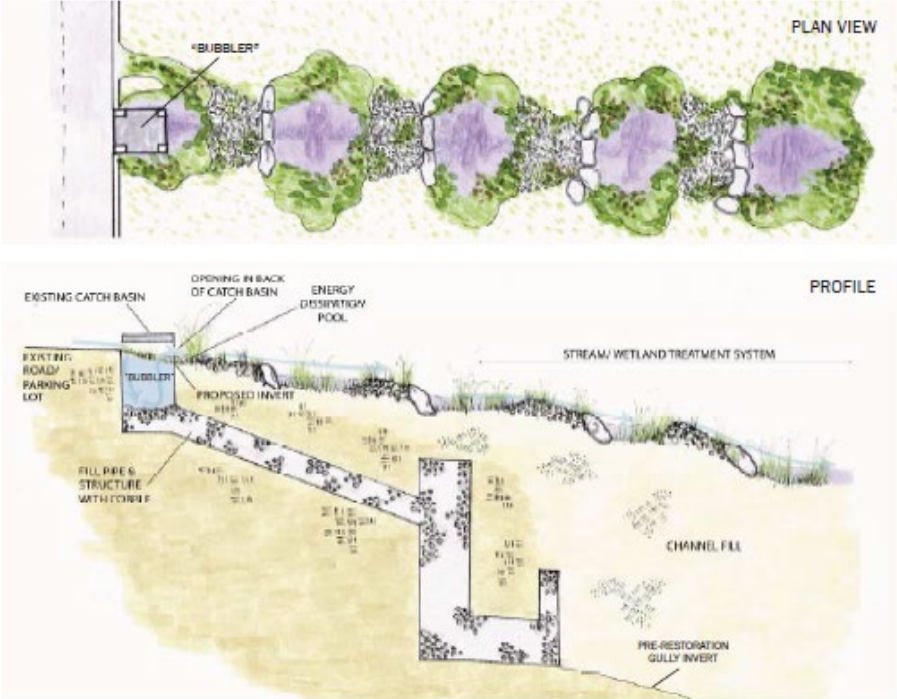
PROJECT DETAILS – REGENERATIVE STORMWATER CONVEYANCE

Carriage Hills Channel Restoration

Restoration provides stable surface conveyance with boulder cascades and pools during large events and conversion to groundwater flow during smaller events, attenuating discharge and treating water. Inset shows initial conditions with incised channel approximately 20 feet deep.

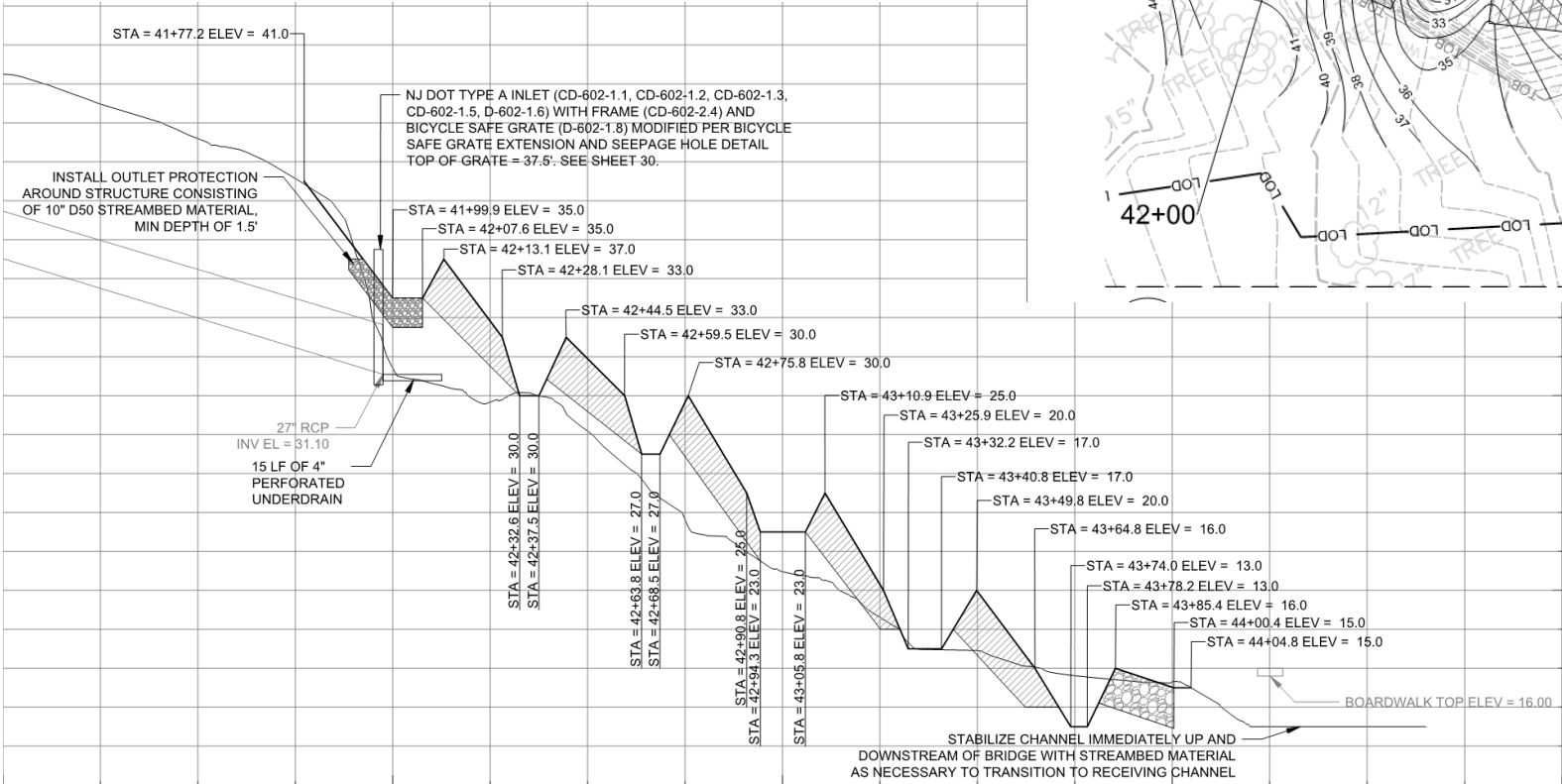
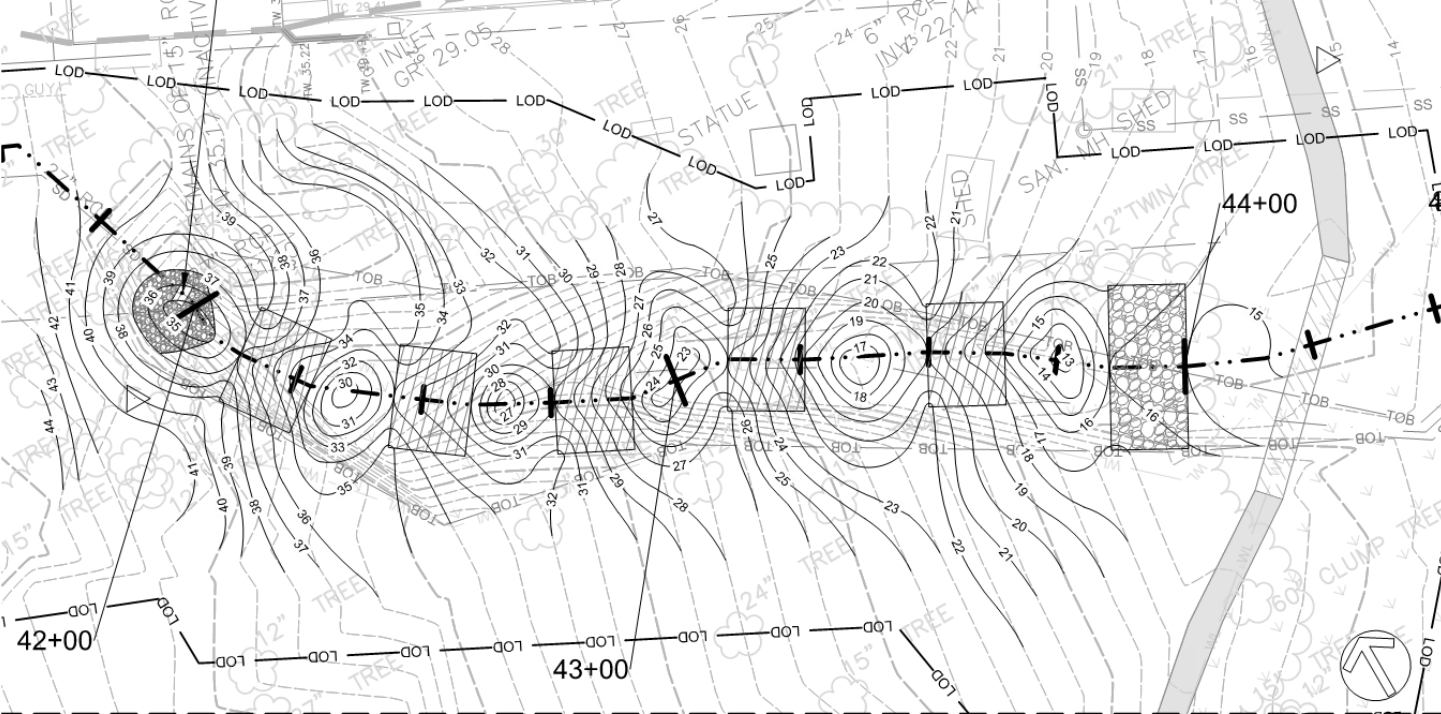


Existing storm drain system converted to a “bubbler” outfall leading to natural stream/wetland treatment system



PROJECT DETAILS – REGENERATIVE STORMWATER CONVEYANCE

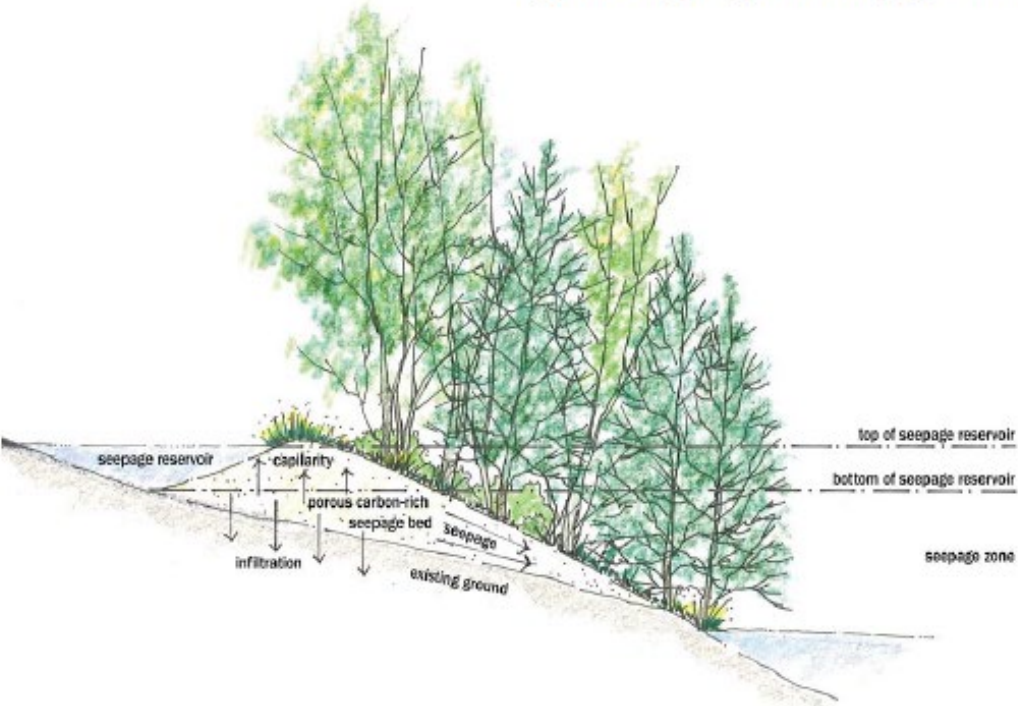
REMOVE EXISTING HEADWALL AND INSTALL NJ DOT TYPE A INLET (CD-602-1.1, CD-602-1.2, CD-602-1.3, CD-602-1.5, D-602-1.6) WITH FRAME (CD-602-2.4) AND BICYCLE SAFE GRATE (D-602-1.8) MODIFIED PER BICYCLE SAFE GRATE EXTENSION AND SEEPAGE HOLE DETAIL EX 27" PIPE INVERT INTO STRUCTURE = 31.06 (PER AS-BUILT) TOP OF GRATE = 37.5'. SEE DETAIL ON SHEET 30.



PROJECT DETAILS – SAND SEEPAGE BERM

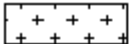


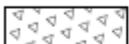
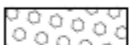

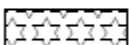


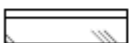




Typical Profile of Sand Seepage Berm



PROJECT DETAILS – NATIVE PLANTINGS



-  PLANTING ZONE 1- EMERGENT MARSH
-  PLANTING ZONE 2- MIXED MESIC
-  PLANTING ZONE 2B- MIXED MESIC TREES AND SHRUBS
-  PLANTING ZONE 2C- ATLANTIC WHITE CEDAR
-  PLANTING ZONE 3- UPLAND
-  PLANTING ZONE 3B- UPLAND TREES AND SHRUBS
-  PLANTING ZONE 4- OPEN HUMMOCK WETLAND
-  PLANTING ZONE 5- DISTURBED AREAS (UPLAND MEADOW)
-  PLANTING ZONE 6- DISTURBED AREAS (MESIC MEADOW)
-  PLANTING ZONE 7- DEGRAW LOOKOUT (UPLAND MEADOW)
-  PLANTING ZONE 8- DEGRAW LOOKOUT (WOODED UPLAND)
-  PLANTING ZONE 9- DEGRAW SWALE

PROJECT DETAILS – NATIVE PLANTINGS

Sweet Flag

Big Bluestem

Tussock sedge

Virginia Wild Rye

Swamp Rose Mallow

Soft Rush

Hardstem Bulrush

Common Threesquare

Swamp Milkweed

Harlequin Blueflag

Green Arrow Arum

Pickerel Weed

Lizard's Tail

Northern sea oats

Wild Blue Indigo

Common boneset

Purple Joe-Pye

Switchgrass

Black-Eyed Susan

New England Aster

Butterfly Weed

Wild Bergamot

Spotted Beebalm

Indiangrass

Broomsedge Bluestem

Canada Goldenrod

Little Bluestem

Tufted harigrass

White Wood Aster

Pennsylvania Sedge

Silver Maple

Sweet Pepperbush

Silky Dogwood

Witch-hazel

Common Winterberry

Spice Bush

Black gum

Arrowwood viburnum

Chestnut Oak

Atlantic White Cedar

Eastern Red Cedar

Eastern Redbud

Blackhaw Viburnum

Common persimmon

Lowbush Blueberry

White Oak

Gray Dogwood

New Jersey Tea

Bearberry

Shadbush

Smooth Sumac

PROJECT DETAILS – NATIVE PLANTINGS

Planting Specifications

- Native seed in all disturbed areas
- Herbaceous material: 2” plugs, 3’ spacing
- Tree and shrub material: #1 and #2 container, 15’ spacing
- 1 year warranty on all plant material
- 85% permanent seed coverage requirement

PROJECT DETAILS – NATIVE PLANTINGS



CONSTRUCTION PROGRESS

Stormwater Canyon Before



Stormwater Canyon After



CONSTRUCTION PROGRESS

North Tributary Before



North Tributary After



CONSTRUCTION PROGRESS



CONSTRUCTION PROGRESS

