



Darlington Golf Course, Mahwah



COUNTY OF BERGEN 2025 Budget

As presented by

County Executive
JAMES J. TEDESCO III

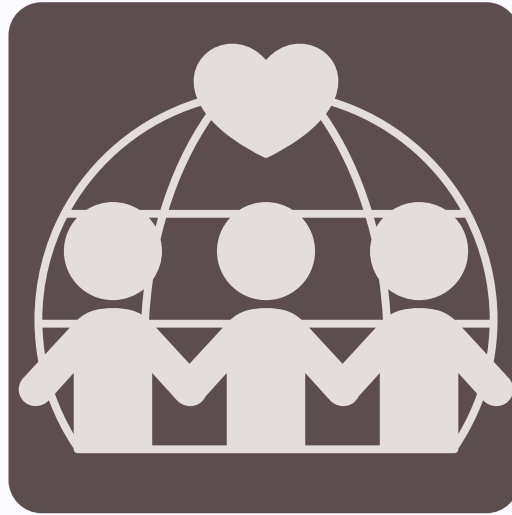
2025 BUDGET OBJECTIVES



Community
Safety



Education



Critical Services



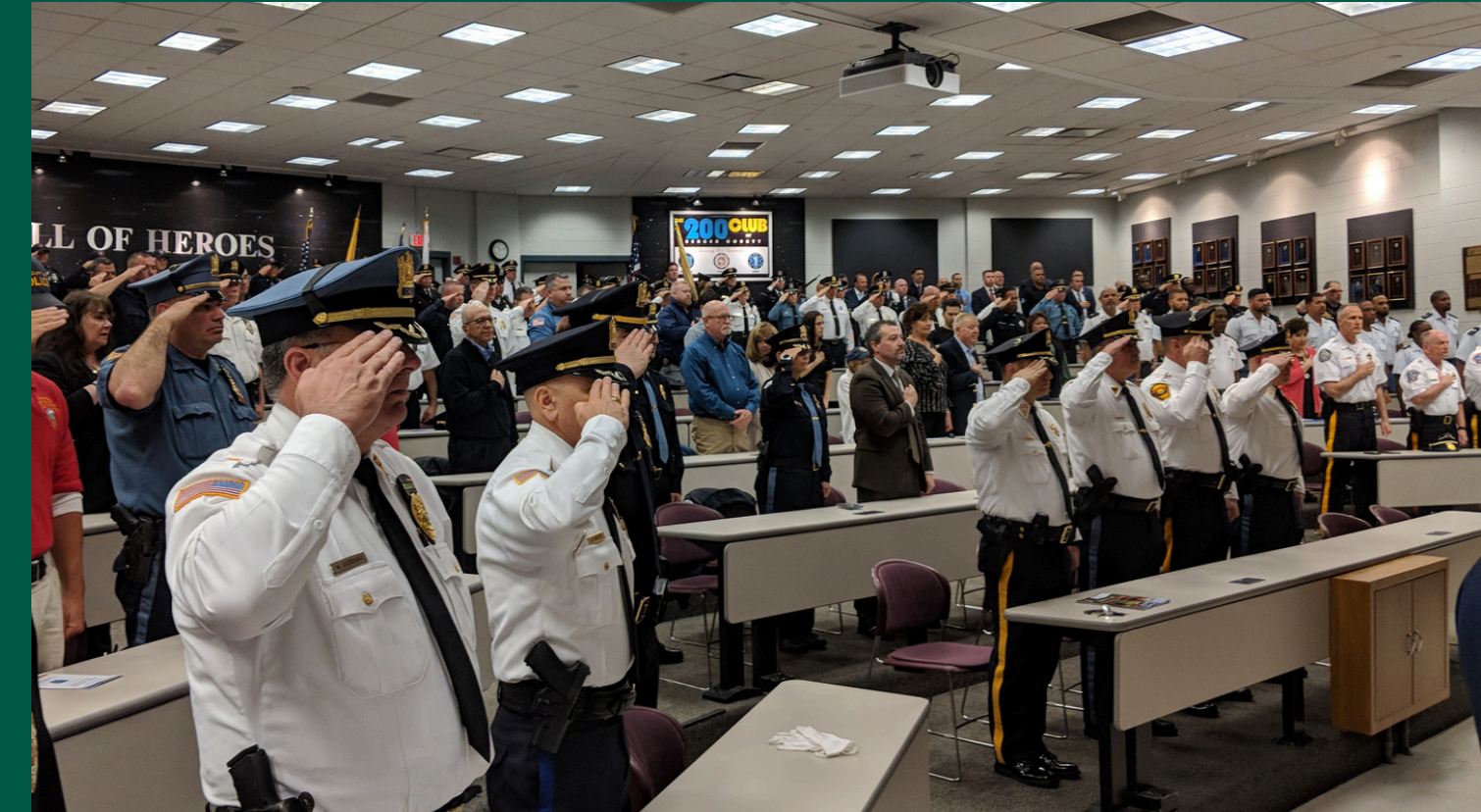
Public
Infrastructure



Parks and
Recreation

REMAINS THE SAME

Community Safety



NEW SHERIFF'S OFFICERS

47



Expanded County Emergency Medical Transportation Unit

Servicing all 70 municipalities in Bergen County



Now a 24/7 operation staffed by **16** full time EMTs and 33 per diems



Bergen County EMS supplement local and hospital EMS squads, providing more reliable response to medical emergencies



In two year of service, answered over **13,500 calls**



Over **\$3.3 million** in reimbursement so far



Program will continue to grow and adapt as public safety demands change



**CELEBRATING
2 YEARS
BERGEN COUNTY
EMS**





**Supporting
Education**

Increased Investment in Education 11 Years Straight

- Bergen Community College
- Technical School District
- Special Services School District





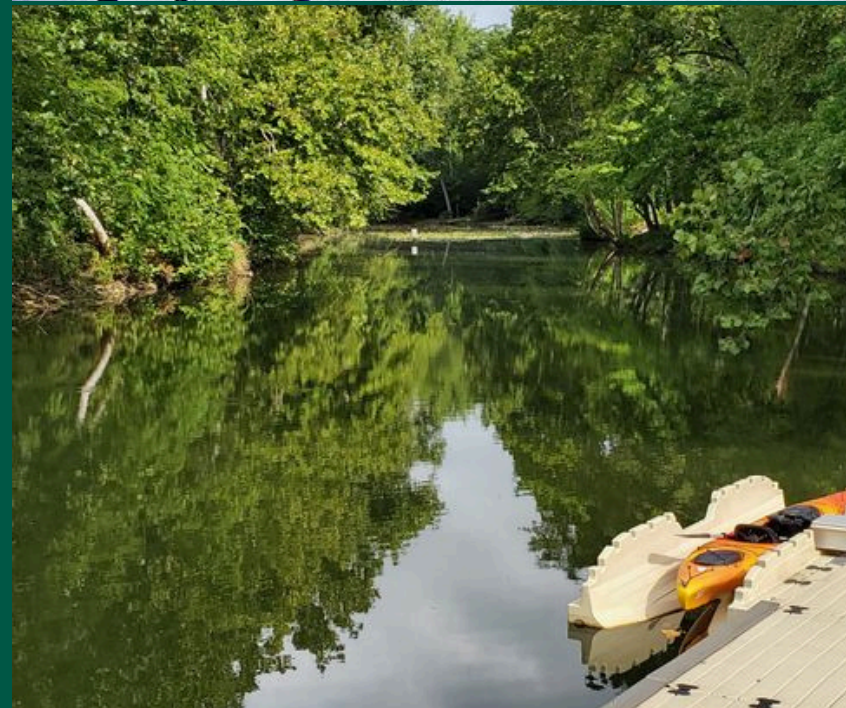
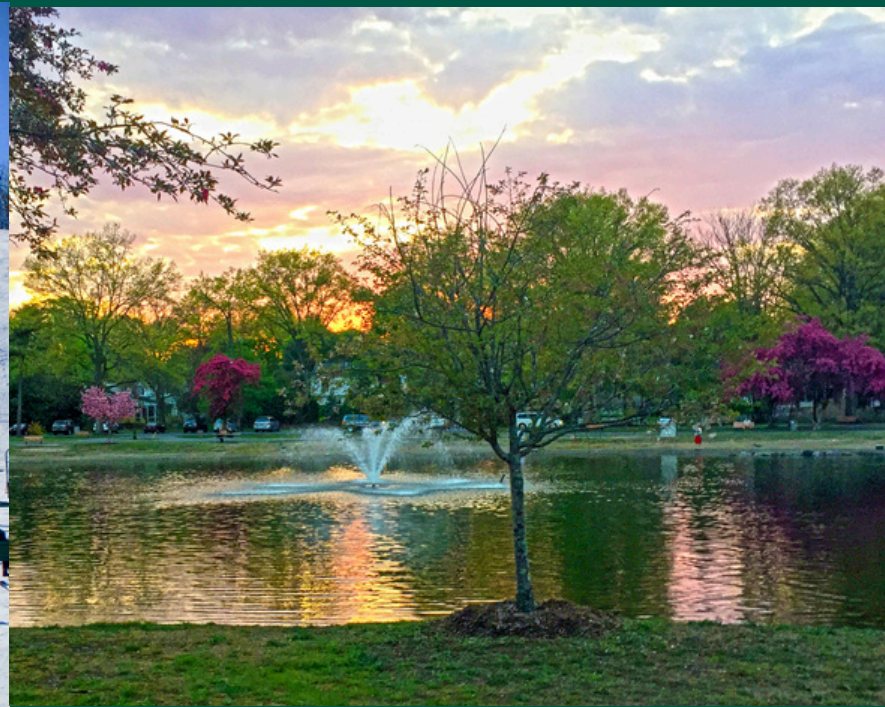
Partnership with the BCTS and College provide students with the opportunity to graduate with **high school diploma & associates degree**

Last year **57** graduating seniors earned both a **high school diploma & associates degree**

Parks and Recreation



Fostering Year- Round Recreation in our Parks



SOUTHERN BERGEN RAILS TO TRAILS PROJECT



This 1.2 mile, 11 acre property will soon become a linear park creating passive recreation opportunities from the Passaic River to downtown Rutherford

First regional committee meeting with Rutherford & East Rutherford was held last month.

RFP for design contractor currently being solicited.



Public Infrastructure



Connecting every municipality to our own fiber network

Midland Park, Little Ferry, Lodi, Teaneck, Palisades Park, and Tenafly are successfully now on the Bergen Fiber Network

Seven additional municipalities soon powering on to faster, more secure, and affordable broadband internet

Towns receive two drops - at borough hall and their municipal library





Tackling Local Infrastructure Improvements

20

drainage improvement projects completed

3,610+

POTHOLES FILLED

1,736

SKIN PATCHES

2

Projects with FIFA World Cup implications this year

Route 17 widening moving to Preliminary Engineering this year

30+

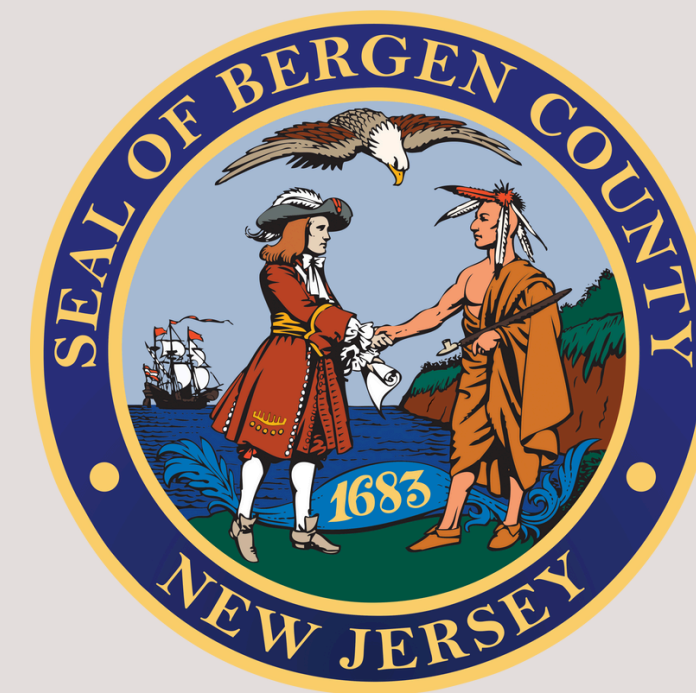
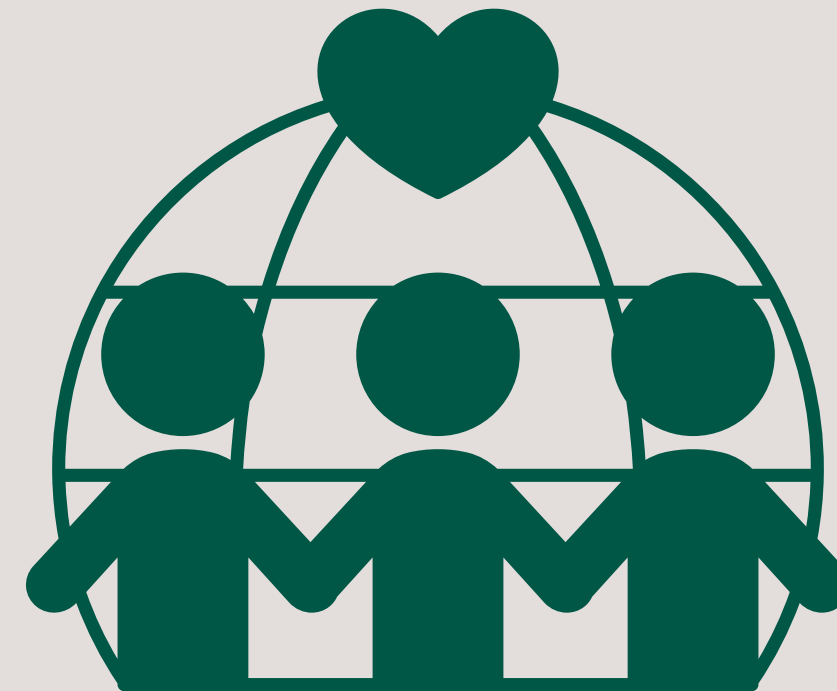
miles of county roads to be resurfaced in 2024

83k

tons of asphalt used to resurface roads

Delivering Critical Services

To those who need help the most





Taking care of our seniors

Launching PACE programming in partnership with Bergen New Bridge Medical Center so seniors can better age at home



Promoting mental health & recovery initiatives

Providing Stigma-Free care here at the County, at Bergen New Bridge, and with our contracted partners



Animal Adoptions

1,235 - adoptions
1,864 - spay/neuter procedures
1,776 - rabies vaccines



Supporting our veterans

Working tirelessly to ensure those who served have housing and receive the benefits they are entitled to



Providing rides & meals

186,621 meals served at nutrition sites
287,296 meals delivered
Over 172,800 rides

The background is a textured teal color. It is decorated with various white line-art icons related to finance and economics. These include stacks of paper money, individual coins, a piggy bank, a bar chart, a hand holding coins, a calculator, and a document with a dollar sign. The icons are scattered around the perimeter of the page.

What goes into your tax bill?



- 1** Municipal School Tax
- 2** Municipal Government
- 3** County Government
*Includes Open Space Tax

Average
Property Tax
Levy In New
Jersey

County Levy
17.9%



Municipal Levy
29.9%



School Levy
52.2%

Well, in Bergen County...

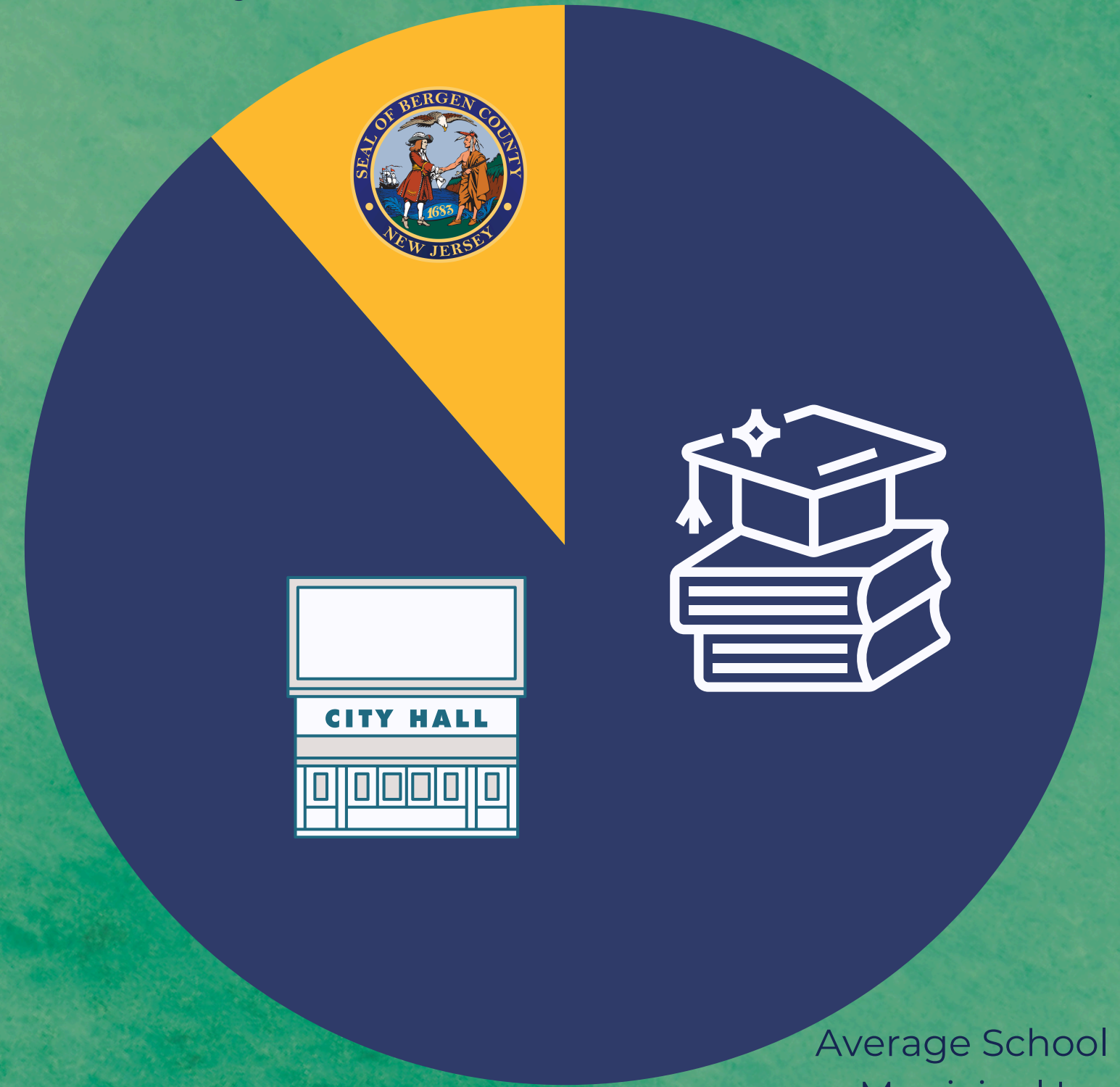
Your County taxes only represent **11.5%**

That is the lowest % in the state for residential properties

County of Bergen
Levy: **11.5%**

<u>County</u>	<u>% of Tax Bill</u>
Bergen	11.5%
Morris	12.1%
Monmouth	14.9%
Burlington	15.1%
Essex	15.5%
Hunterdon	16.2%
Middlesex	17.0%
Somerset	17.5%
Union	17.8%
Sussex	18.8%
Hudson	20.0%

<u>County</u>	<u>% of Tax Bill</u>
Gloucester	20.6%
Passaic	21.3%
Atlantic	22.3%
Camden	22.4%
Warren	23.3%
Mercer	24.4%
Ocean	24.6%
Cape May	29.0%
Cumberland	37.0%
Salem	38.0%



Average School and Municipal Levy: **89.5%**

Maintained Aaa Bond Rating

October 2024 - Reaffirmed

Moody's cited our positive financial outlook

Available fund balance reaching nearly 20% of revenue

Enduring strengths of the County's economy and tax base, which continues to grow, and strong fiscal management team

Aaa HIGHEST RATING ISSUED BY

MOODY'S
INVESTORS SERVICE

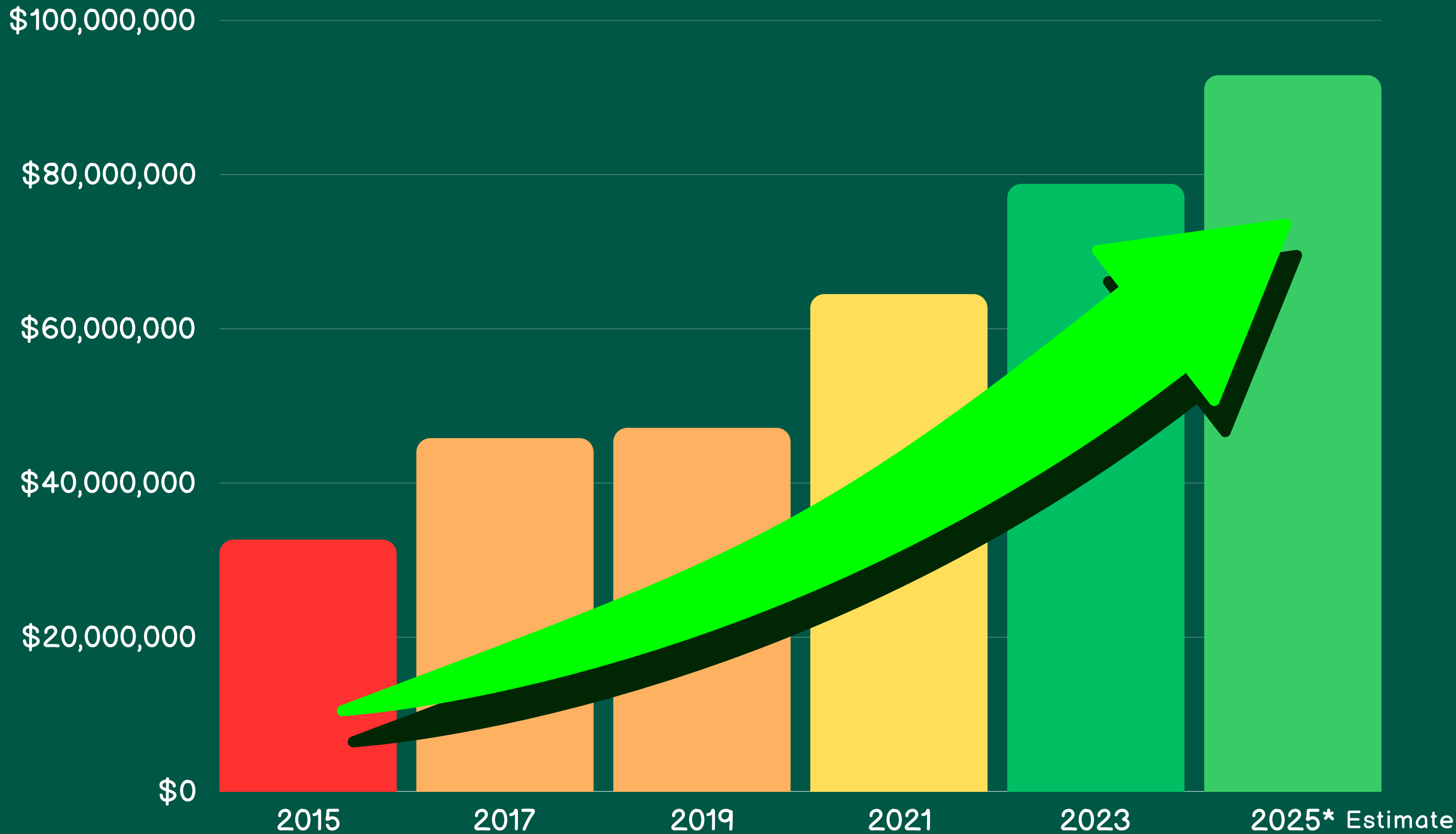


Fund Balance



	2019	2020	2021	2022	2023	2024	2025
Beginning Fund Balance	\$48.6M	\$47.2M	\$60.6M	\$64.5M	\$69.9M	\$78.8M	\$86.2M
Ending Fund Balance	\$47.2M	\$60.6M	\$64.5M	\$69.9M	\$78.8M	\$86.2M	\$92.8M *Estimated

Fund Balance



County	Tax Rate
Cape May	0.196
Monmouth	0.207
Bergen	0.216
Morris	0.229
Ocean	0.311
Burlington	0.316
Somerset	0.323
Essex	0.326
Middlesex	0.334
Hunterdon	0.342
Hudson	0.352

County	Tax Rate
Union	0.356
Atlantic	0.389
Sussex	0.422
Passaic	0.470
Gloucester	0.472
Mercer	0.555
Warren	0.556
Camden	0.589
Cumberland	0.866
Salem	1.082

**Bergen County has
3rd lowest tax-rate
in the state**

Largest Ratable Base in New Jersey

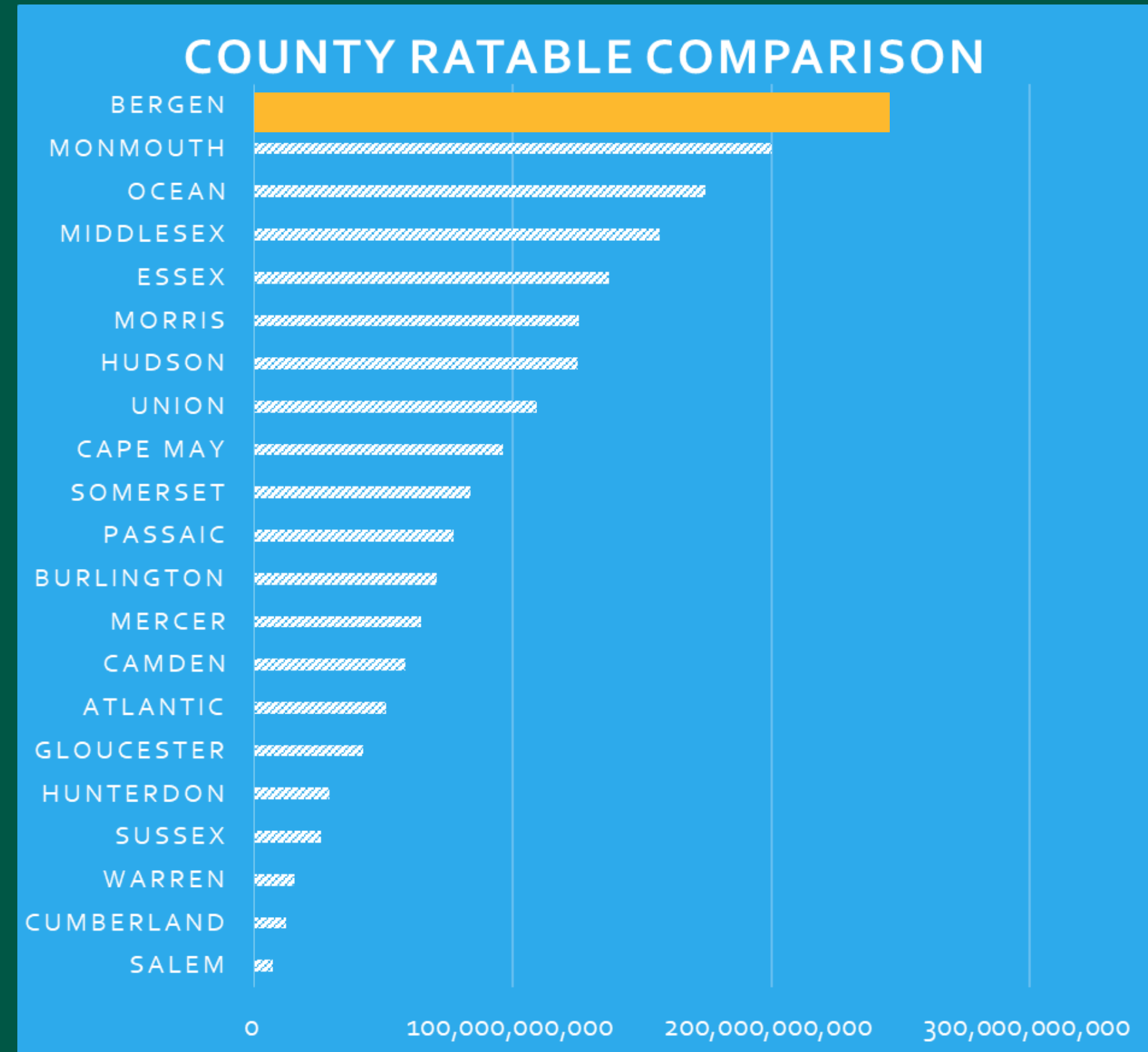
\$244.8 Billion Ratable Base

Grew by **\$18.2 billion** last year

22.4% higher than any other County in NJ

Property values have continued to grow steadily over last 11 years

Another key factor in maintaining Aaa rating



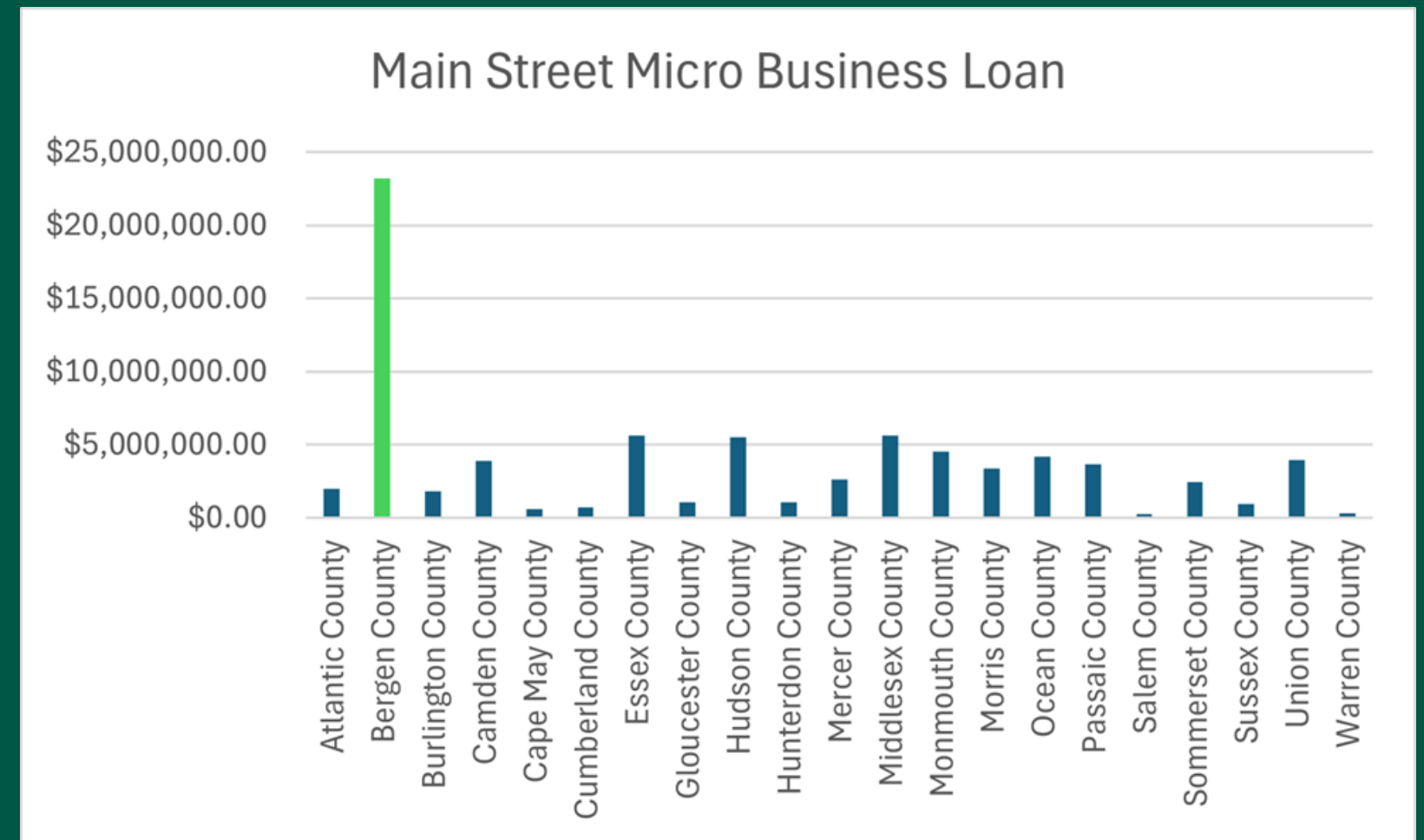
2024 Property Tax Assessed Values

Ratable Category	% One Year Increase
 Residential Properties	<u>4.72%</u> 
 Commercial Properties	<u>2.52%</u> 
 Industrial Properties	<u>7.56%</u> 
 Apartment Properties	<u>4.66%</u> 
<u>Total Ratable Growth</u>	<u>4.47%</u> 



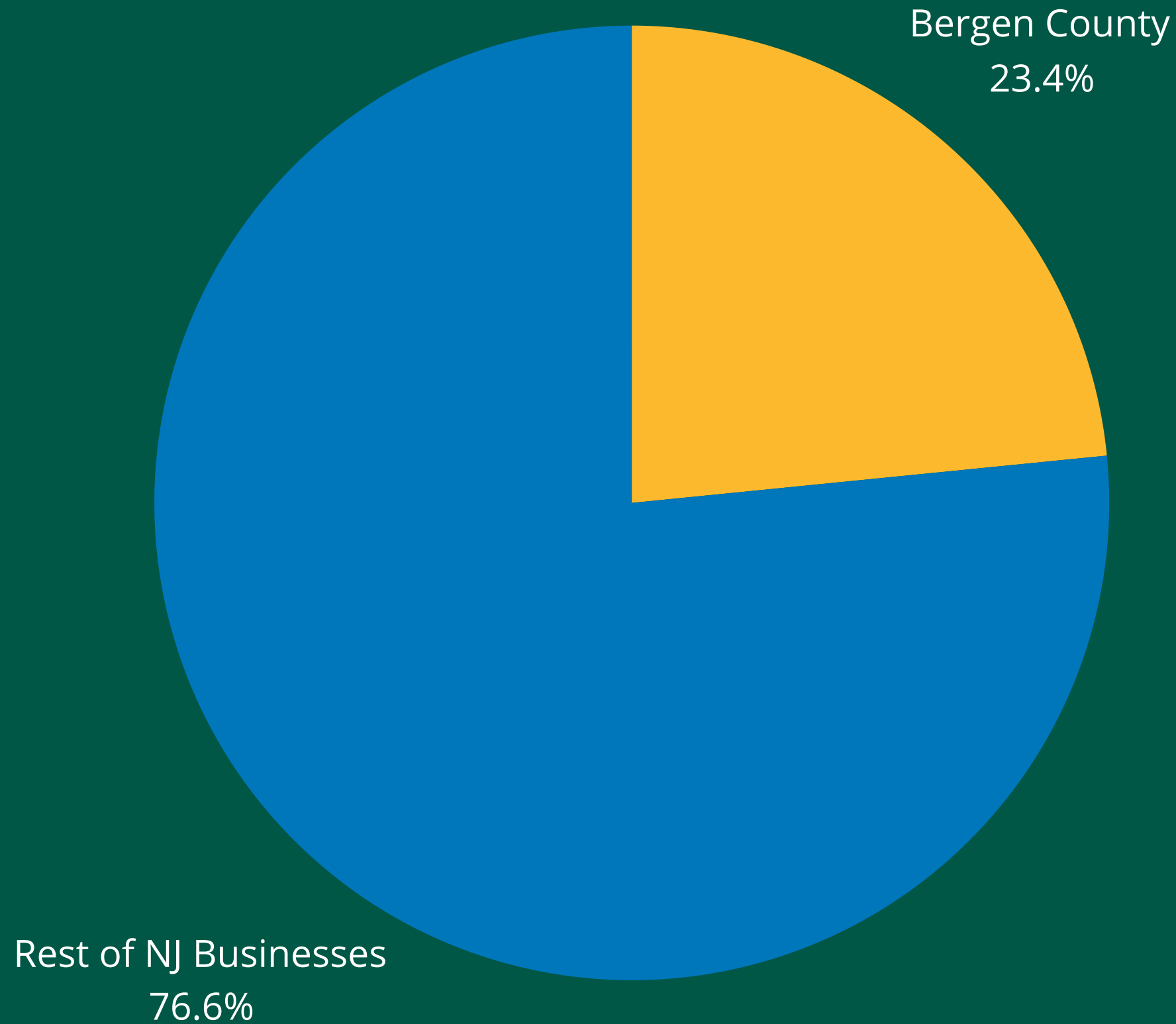
Bergen County Small Businesses Capitalizing on Grants

Of the total
\$77,352,720.86 statewide
total amount awarded,
Bergen County small
business owners received
\$23,172,883.11



This is possible largely because of promotion efforts from
Bergen County's Division of Economic Development

Bergen Knows Business



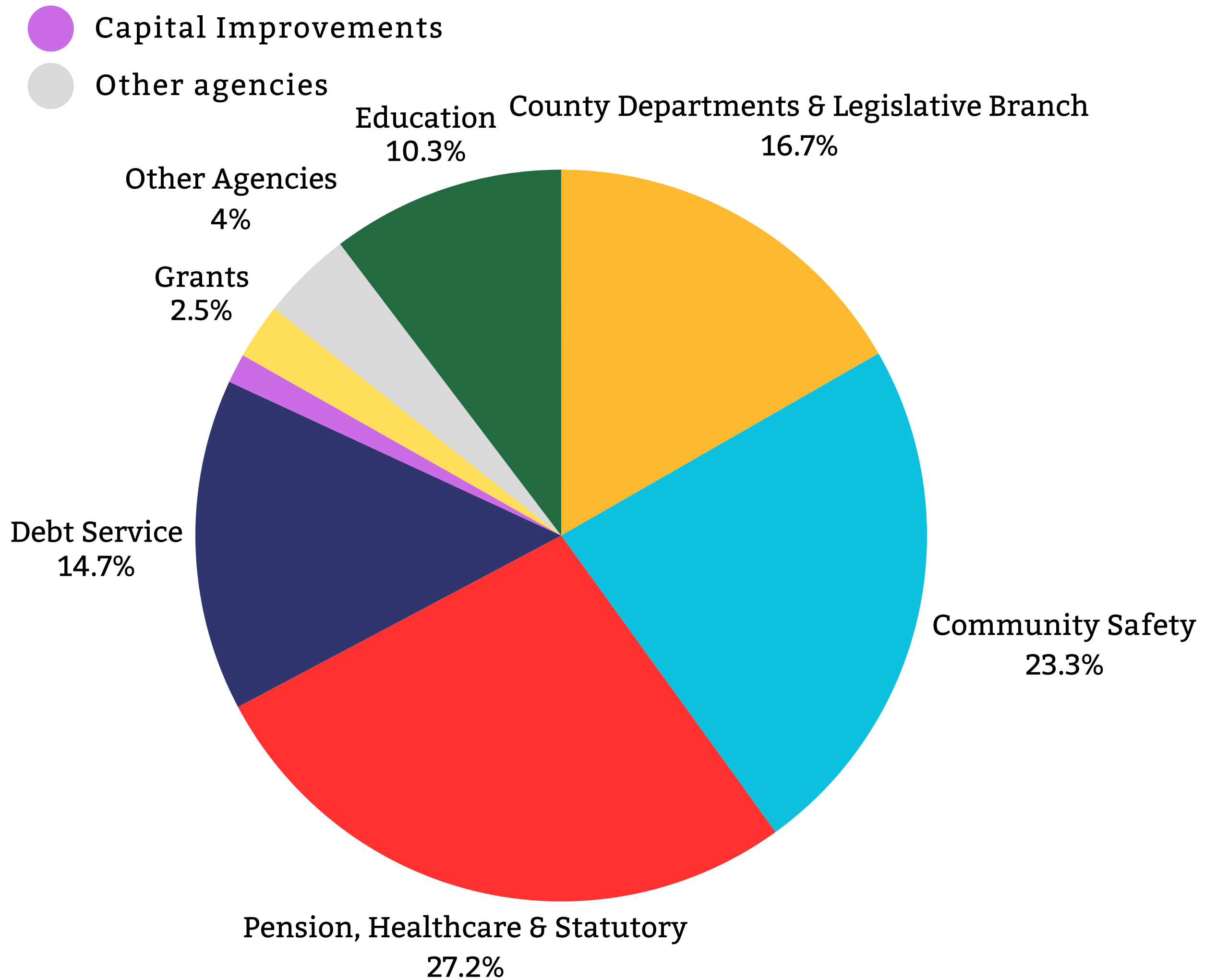
Bergen County companies made up 23.42% of the total money allocated through these grant and loan programs, valuing \$35,785,860.08. The statewide total is \$152,817,056.37.

First year without COVID Funding



COUNTY HAD TO
ABSORB \$39.6 MILLION
DUE TO EXPIRATION OF
AMERICAN RESCUE
PLAN FUNDING

2025 Proposed Budget





\$720,157,873

TOTAL BUDGET

What does this mean for your taxes?



County Property Taxes

\$5.81 INCREASE PER MONTH

\$69.71 INCREASE PER YEAR

ON THE AVERAGE BERGEN
COUNTY HOUSE ASSESSED

AT \$530,000.00



Budget Credits

County Executive James J. Tedesco, III extends his appreciation to following individuals for their dedication, work ethic and professionalism in the formulation of the 2025 Operating and Capital Budget.



TREASURY & DIVISION OF BUDGET & CAPITAL PLANNING

Jon Rheinhardt - Chief Financial Officer

Melissa Howard - Treasurer

And Staff

EXECUTIVE OFFICE

Thomas J. Duch Esq. - County Administrator/County Counsel

Kenneth Ehrenberg, Esq. - Deputy County Administrator

Anthony Iacono - Deputy County Administrator

Craig Dorsett - Chief of Staff

Derek Sands - Deputy Chief of Staff

Jared Lautz - Deputy Chief of Staff

