

GREEN ACRES PUBLIC HEARING APPLICATION FOR COMPLETELY INCLUSIVE PLAYGROUND PROJECT AT PASCACK BROOK COUNTY PARK

PUBLIC HEARING CONDUCTED BY THE BOARD OF COMMISSIONERS,
COUNTY ADMINISTRATION BUILDING, HACKENSACK, NJ

JANUARY 15, 2025



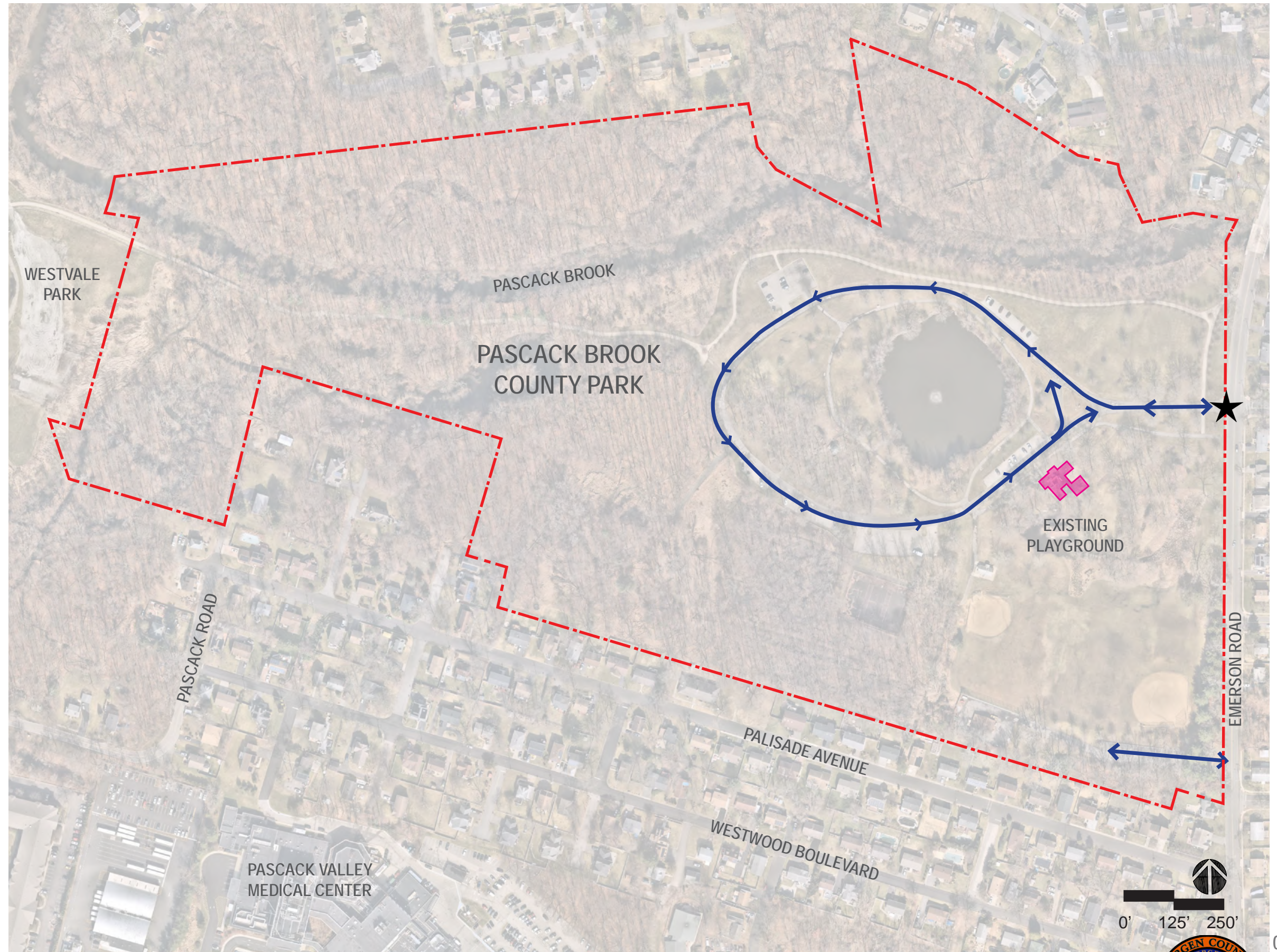
01.15.2025



PARK CONTEXT ANALYSIS

LEGEND

- PROPERTY LINE
- EXISTING PLAYGROUND
- ↔ PARK ROADWAY
- ★ MAIN PARK ENTRANCE



COMPLETELY INCLUSIVE PLAYGROUND

PASCACK BROOK COUNTY PARK, WESTWOOD, NJ



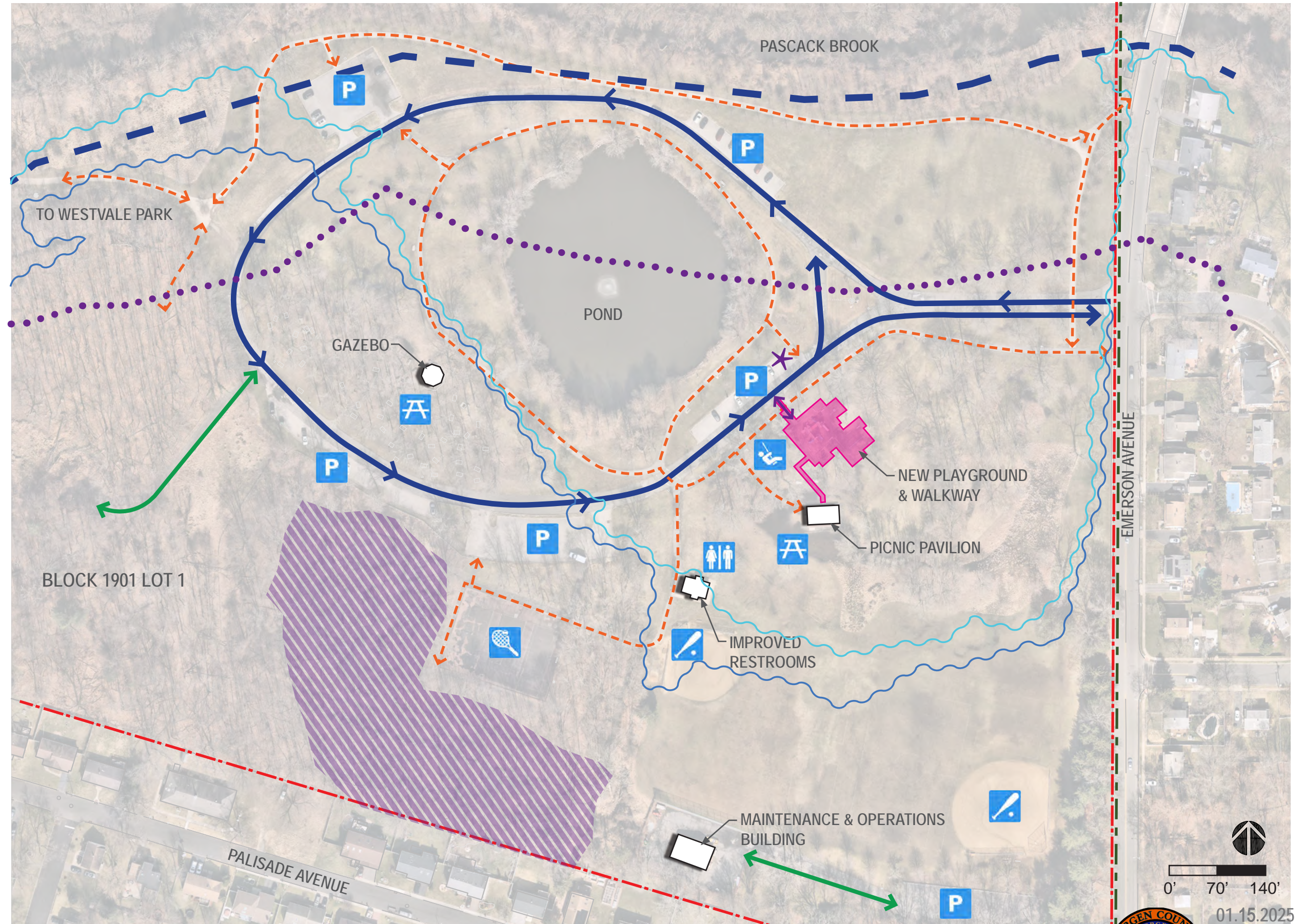
01.15.2025



SITE PLAN

LEGEND

- - - PROPERTY LINE
- - - RIGHT OF WAY LINE
- - - FLOODWAY LIMIT LINE
- ~ ~ ~ FLOOD HAZARD AREA LINE
- ~ ~ ~ 100 YEAR FLOOD LINE
- . . . RIPARIAN ZONE
- WETLAND AREA
- ↔ PARK ROADWAY
- ↔ MAINTENANCE ACCESS
- - - PEDESTRIAN PATH
- ↔ ACCESSIBLE ROUTE
- ✳ ACCESSIBLE PARKING
- PROJECT AREA
- P PLAYGROUND
- P PARKING LOT
- ♂ ♀ PUBLIC RESTROOM
- A PICNIC AREA
- 🎾 TENNIS COURT
- ⚾ BALL FIELD



COMPLETELY INCLUSIVE PLAYGROUND

PASCACK BROOK COUNTY PARK, WESTWOOD, NJ



01.15.2025

SITE FLOOD AREA ANALYSIS

LEGEND

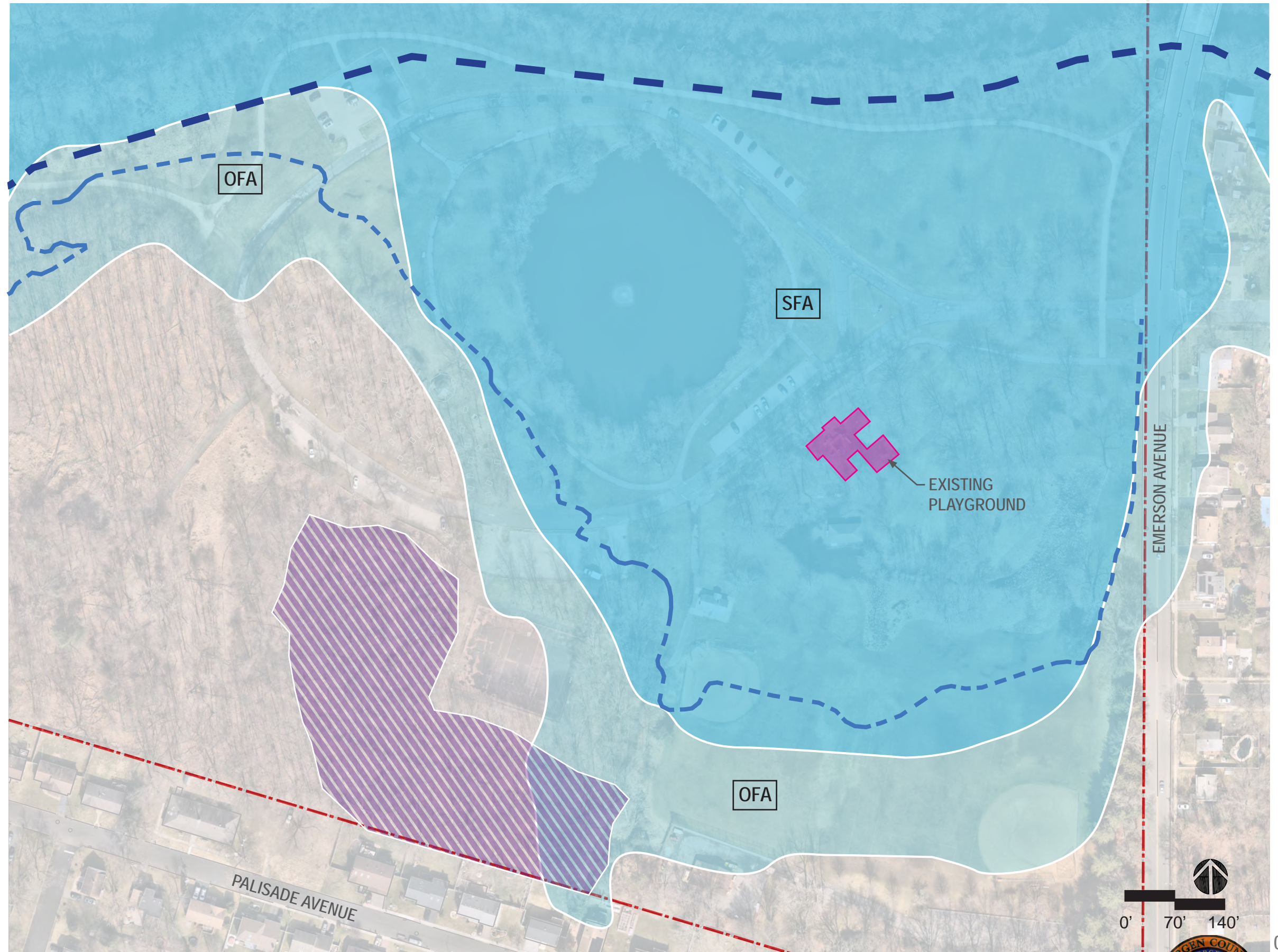
- EXISTING PLAYGROUND
- WETLAND AREA**
- FLOODWAY LIMIT**
- FLOOD HAZARD AREA LIMIT**
- SPECIAL FLOOD HAZARD AREAS (SFA)* [1% ANNUAL CHANCE OF FLOOD / 100-YEAR FLOODPLAIN]
- OTHER FLOOD AREAS (OFA)* [0.2% ANNUAL CHANCE OF FLOOD / 500-YEAR FLOODPLAIN]

SOURCE:

*FEMA FLOOD INSURANCE RATE MAP

**WETLANDS L.O.I., TRANSITION AREA

AVERAGING, G.P. NO. 17 & FLOOD HAZARD AREA PERMITTING PLAN BY COSTA ENGINEERING (2010)



COMPLETELY INCLUSIVE PLAYGROUND

PASCACK BROOK COUNTY PARK, WESTWOOD, NJ



01.15.2025



EXISTING CONDITIONS PHOTOS



1 PLAYGROUND



2 PARKING LOT ADJACENT TO POND



KEY MAP



3 PAVILION



4 RESTROOM

PLAYGROUND SIZE	5,300 S.F.
SWINGS	2 STRAPS, 2 BUCKETS
2-5 PLAY EQUIPMENT	YES
5-12 PLAY EQUIPMENT	YES
SENSORY PLAY EQUIPMENT	NO
PLAY EQUIPMENT CONDITION	MODERATE - POOR
SAFETY SURFACING	WOOD MULCH
PLAYGROUND ACCESS	LIMITED
ADA ACCESSIBLE PATH FROM PARKING	YES
SEATING	4 BENCHES
PAVILION W/ PICNIC TABLES	YES
DISTANCE TO RESTROOM	350 FT.
DISTANCE TO PAVILION	270 FT.
DISTANCE TO PARKING	70 FT.
NEARBY OUTDOOR RECREATION	SOFTBALL FIELD, BASEBALL FIELD, SOCCER FIELD, TENNIS COURTS
FLOOD CONDITION	FLOOD HAZARD AREA

COMPLETELY INCLUSIVE PLAYGROUND

PASCACK BROOK COUNTY PARK, WESTWOOD, NJ



01.15.2025



COMMUNITY SURVEY FEEDBACK

MOST DESIRED AMENITIES

1. SHADED AREAS

2. FENCING

3. IMAGINATIVE PLAY

4. SENSORY PLAY

5. WHEELCHAIR ACCESSIBLE

6. COGNITIVE PLAY

7. COMMUNICATION PLAY

8. QUIET PLAY AREA

COMPLETELY INCLUSIVE PLAYGROUND

PASCACK BROOK COUNTY PARK, WESTWOOD, NJ



01.15.2025



SITE PLAN

LEGEND

- PROPERTY LINE
- PROJECT AREA
- ↔ PARK ROADWAY
- ↔ MAINTENANCE ACCESS
- ↔ PEDESTRIAN PATH
- PLAYGROUND
- P PARKING LOT
- PUBLIC RESTROOM
- A PICNIC AREA
- TENNIS COURT
- BALL FIELD



COMPLETELY INCLUSIVE PLAYGROUND

PASCACK BROOK COUNTY PARK, WESTWOOD, NJ



01.15.2025



CONCEPT PLAN

- A** PAVER WALKWAY
- B** ASPHALT WALKWAY
- C** 4 FT. ORNAMENTAL FENCE ON CONCRETE CURB
- D** SAFETY SURFACE
- E** 5-12 PLAY AREA
- F** 2-5 PLAY AREA
- G** QUIET PLAY AREA
- H** BENCH
- I** PLANTING BED WITH NATIVE SHRUBS, PERENNIALS & ORNAMENTAL GRASSES
- J** EXISTING TREES
- K** PICNIC TABLES AT PAVILION
- L** IMPROVED RESTROOMS



COMPLETELY INCLUSIVE PLAYGROUND

PASCACK BROOK COUNTY PARK, WESTWOOD, NJ



01.15.2025



PLAN DIAGRAM

- PROJECT AREA
- PARK ROADWAY
- PEDESTRIAN PATH
- EXISTING TREES TO REMAIN
- TREE CANOPY SHADE (APPROX. 2,215 S.F. TOTAL; 45% COVERAGE ON UNITARY SURFACING AREA)
- UNITARY SURFACING AREA (APPROX. 4,940 S.F. TOTAL)
- (NO TREE REMOVAL WITHIN PROJECT SCOPE)



COMPLETELY INCLUSIVE PLAYGROUND

PASCACK BROOK COUNTY PARK, WESTWOOD, NJ



01.15.2025



PLAY ZONES

- A** 5-12 PLAY AREA
- B** 2-5 PLAY AREA
- C** 2-12 PLAY AREA
- D** QUIET PLAY AREA



COMPLETELY INCLUSIVE PLAYGROUND

PASCACK BROOK COUNTY PARK, WESTWOOD, NJ



01.15.2025



CONCEPT PLAN - MATERIALS & PLANTING



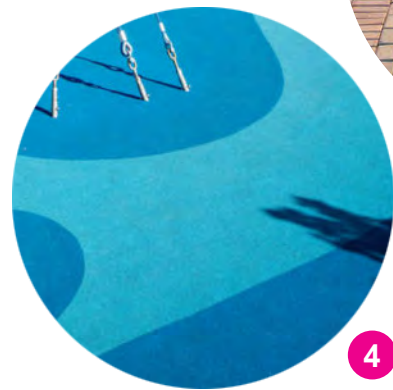
1 ASPHALT WALKWAY



2 CONCRETE UNIT PAVERS



3 SAFETY SURFACE



4 NATIVE PLANTING BED



5 EXISTING SHADE TREES



COMPLETELY INCLUSIVE PLAYGROUND

PASCACK BROOK COUNTY PARK, WESTWOOD, NJ



01.15.2025



CONCEPT PLAN - FURNISHINGS



1 BENCH



2 PICNIC TABLE & SEATING



3 DECORATIVE FENCE



COMPLETELY INCLUSIVE PLAYGROUND

PASCACK BROOK COUNTY PARK, WESTWOOD, NJ



01.15.2025



PLAY EQUIPMENT - OVERALL VIEW



COMPLETELY INCLUSIVE PLAYGROUND

PASCACK BROOK COUNTY PARK, WESTWOOD, NJ



01.15.2025



PLAY EQUIPMENT - 5-12 YEAR OLD PLAY ZONE



COMPLETELY INCLUSIVE PLAYGROUND

PASCACK BROOK COUNTY PARK, WESTWOOD, NJ



01.15.2025



PLAY EQUIPMENT - 2-5 YEAR OLD PLAY ZONE



LEARNING PANEL
COGNITIVE

TOP MEMBRANE,
INCLINED NET, & SLIDE
PHYSICAL+SOCIAL+
EMOTIONAL

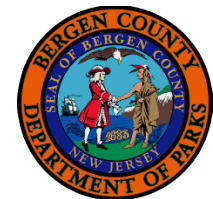
CRAWL-THROUGH HOLES
PHYSICAL+SOCIAL+
EMOTIONAL+COGNITIVE

PLAYHOUSE
COGNITIVE+
SOCIAL+EMOTIONAL



COMPLETELY INCLUSIVE PLAYGROUND

PASCACK BROOK COUNTY PARK, WESTWOOD, NJ



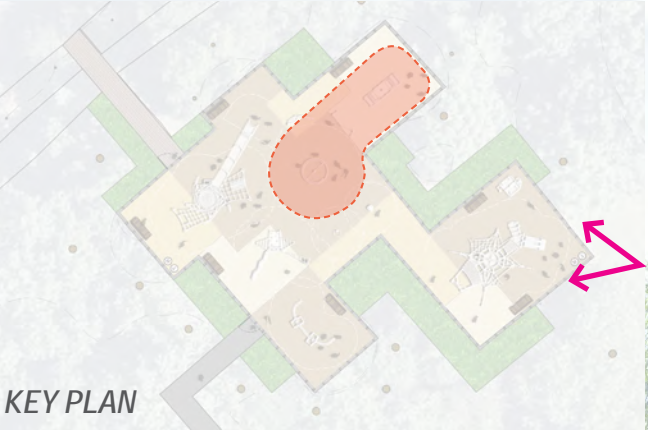
01.15.2025



PLAY EQUIPMENT - 2-12 YEAR OLD PLAY ZONE



CAROUSEL
PHYSICAL+SOCIAL+
EMOTIONAL



PLAY PANEL &
TALKING TUBE
SOCIAL+ EMOTIONAL
+COGNITIVE

SPRING SEESAW
PHYSICAL+SOCIAL+
EMOTIONAL+COGNITIVE

COMPLETELY INCLUSIVE PLAYGROUND

PASCACK BROOK COUNTY PARK, WESTWOOD, NJ



01.15.2025



PLAY EQUIPMENT - QUIET PLAY AREA



COMPLETELY INCLUSIVE PLAYGROUND

PASCACK BROOK COUNTY PARK, WESTWOOD, NJ



01.15.2025



PLAY EQUIPMENT - OVERALL VIEW



COMPLETELY INCLUSIVE PLAYGROUND

PASCACK BROOK COUNTY PARK, WESTWOOD, NJ



01.15.2025



PLAY EQUIPMENT - OVERALL VIEW



COMPLETELY INCLUSIVE PLAYGROUND

PASCACK BROOK COUNTY PARK, WESTWOOD, NJ



01.15.2025



PLAY EQUIPMENT - OVERALL VIEW



COMPLETELY INCLUSIVE PLAYGROUND

PASCACK BROOK COUNTY PARK, WESTWOOD, NJ



01.15.2025



PLAY EQUIPMENT - OVERALL VIEW



COMPLETELY INCLUSIVE PLAYGROUND

PASCACK BROOK COUNTY PARK, WESTWOOD, NJ



01.15.2025



PLAY EQUIPMENT - OVERALL VIEW



COMPLETELY INCLUSIVE PLAYGROUND

PASCACK BROOK COUNTY PARK, WESTWOOD, NJ



01.15.2025



PLAY EQUIPMENT - OVERALL VIEW



KOMPAN
Let's play

COMPLETELY INCLUSIVE PLAYGROUND

PASCACK BROOK COUNTY PARK, WESTWOOD, NJ



01.15.2025



CONCEPT DESIGN PRELIMINARY COST ESTIMATE

REMOVALS	\$129,562
SITE WORK & PAVEMENT	\$306,819
SITE FURNISHINGS	\$911,000
LANDSCAPE	\$66,576
RESTROOM IMPROVEMENTS	\$25,000
DRAINAGE	\$20,000
DESIGN CONTINGENCY	\$65,719

BASE CONSTRUCTION COST	\$1,524,676
CONSTRUCTION CONTINGENCY	\$152,468
ENGINEERING & CONSTRUCTION SUPERVISION/ INSPECTION	\$218,029
PRELIMINARY ASSESSMENT REPORT	\$10,000
INCIDENTAL COSTS	\$20,000
PERMIT FEES	\$35,250

TOTAL PROJECT COST	\$1,960,422



COMPLETELY INCLUSIVE PLAYGROUND
 PASCACK BROOK COUNTY PARK, WESTWOOD, NJ



01.15.2025



THANK YOU!
QUESTION & ANSWER PERIOD



01.17.2024

