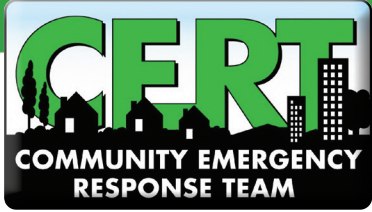


Bergen County Office of Emergency Management - CERT

The Civilian Responder

Volume 1, Issue 1 ~ March 2015



Gidget Petry Promoted to Sergeant



Long time CERT Director Gidget Petry was promoted to sergeant in the Bergen County Police Department on October 1, 2014.

Gidget is a lifelong resident of Bergen County and graduated from Hackensack High School. She has attended Montclair University pursuing a BS in Justice studies. The new sergeant began her career in law enforcement with the Hackensack Police Department in 2001 transferring to the BCPD two years later serving as a patrol officer.

In 2005 Gidget was assigned to the Bergen County Office of Emergency Management and was appointed Deputy Coordinator in 2012. While in OEM she has served as CERT and CART Director and is responsible for training over 8000 volunteers.

In addition to her OEM duties she has served as a member of the BCPD Mounted Unit and is currently a Senior Hostage Negotiator for the SWAT Team. Gidget is also a member of the Rapid Deployment Force (RDF) command staff and a Access and Functional Needs (AFN) liaison to the state. Sgt. Gidget Petry has been reassigned as a patrol supervisor. As a result of her promotion Gidget is no longer assigned to Emergency Management but she will continue her duties as the CART Director.

Every CERT member acknowledges her contribution to the program and *wishes her good luck!*

2015 CERT Continuing Education Program

2015 is going to bring new training opportunities to our current CERT membership. A new monthly training program will be offered to include instruction in Communications, Community Relations, Staging, Emergency Operation Center (EOC), Commodities Distribution, Shelter Operations and Shelter Management .

Additionally, refresher training will be offered in Basic First Aid, Rescue, Fire Safety and Incident Command (ICS).

Some of these programs will be taught in a classroom environment while others will be conducted at the fire training grounds. Registration opportunities will be offered through your local CERT Team Leader.

Watch for next month's issue of *The Civilian Responder* for dates and times for these programs.

INSIDE THIS ISSUE

Featured CERT Team	2
Meet Tom Metzler	2
CART Trailer	2
YOU, are CERT	3
March/April Training	3
Volunteer Force	3
Your CERT Photo's	4

Featured CERT Team: Rochelle Park CERT

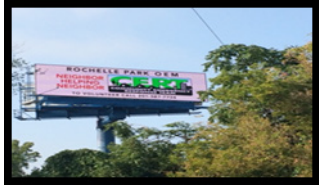
by Patricia Donatello

As a result of the devastation of Hurricane Floyd in 1999, the Rochelle Park OEM/CERT Team was formed.

Trying to recruit new members, the OEM Director turned to the wives/girlfriends of members of the Fire Department to see if anyone was interested. In 2005, we had the biggest graduating class a total 11 members join CERT. Through the years, we have grown to where we are now.

We actively assist the Police Department when needed; either walking door to door to hand out flyers and inquiring about residents safety during a week-long power outage in town to registering citizens for our Swiftreach Notification Program (Reverse 911) during Rochelle Park Day.

In 2007, the Lodi OEM Director called Rochelle Park's OEM Director for CERT's assistance at a mutual aid warehouse fire. At 11:30 pm, 7 CERT members arrived in Lodi. We were assigned to traffic detail and also to relieve their CERT team at a shelter.



In 2012, our biggest challenge arose during Hurricane Sandy. At the request of the Bergen County OEM, Rochelle Park CERT was asked to open and manage a shelter at the new Juvenile Detention Center in Teterboro; which was still under construction. 8 members arrived and within a short amount of time, along with the assistance of several police officers, set up enough cots to house 300 clients. Rochelle Park CERT operated that shelter until it was dismantled 27 hours later. They oversaw registration, food services and medical emergencies, all while still making sure the first responders in Rochelle Park were being taken care of with whatever needs they had.

It's our privilege and honor to be a part of the Rochelle Park CERT Team.

CERT Mission Assigned to Deputy Coordinator Metzler

Bergen County OEM Deputy Coordinator Tom Metzler has been assigned to oversee the CERT Mission effective February 1st following the promotion and reassignment of Sgt. Gidget Petry. Tom has spent over 35 years in emergency services having served as a member of the Hawthorne Ambulance, Corps, Fair Lawn Fire Department where he served as chief in 1987, Director of Emergency Services and OEM Coordinator for the Borough of Fair Lawn.

He spent three years working as a FEMA Disaster Assistance Employee and has responded to 15 declared emergencies in the United States and abroad. Prior to being hired as a Deputy Coordinator for Bergen County, he was Borough Manager in Fair Lawn. Metzler currently is responsible for maintenance of the County Emergency Operations Plan and review of the municipal plans. Additionally he oversees the Emergency Management Assistance Grant Program and is responsible for the motorized and wheeled fleet.

Tom is a CERT instructor and his former students often share his belief that with CERT, *"not every member will be able to perform every task, but, there is a task for every member."*

"...not every member will be able to preform every task, but, there is a task for every member."

CART Trailer Returned to Service

For the past five years it was known as county asset #45-256, a white 2009 Cargo Craft Trailer, NJ Registration Y319CG parked at the county lot in Paramus. The trailer was damaged when struck by a snow plow and removed from service.

In an attempt to increase the emergency animal shelter capacity in Bergen County, the Emergency Management Staff restored the trailer, repairing the damage, sealing the leaks and testing the equipment.

Today, 45-256 is known as Animal Shelter #1. The trailer is completely self contained and has eighteen stainless steel cages with a drainage trough going to a holding tank, a potable water storage tank that supplies both a interior sink and interior and exterior hose bibs, heat and air conditioning..

Additionally, the trailer is powered by a gasoline generator and has a exterior awning.

Bergen County OEM currently has two animal shelter trailers.



YOU, Are CERT...

YOU are a member of your County or Community Emergency Response Team.

YOU have been trained to be better prepared to respond to emergency situations.

YOU can give critical support to first responders, provide immediate assistance to victims, and organize spontaneous volunteers at a disaster site.

YOU can also help with non-emergency projects that help improve the safety of the community.

(Reprinted from NJOEM CERT brochure)

The events of September 11 will never be forgotten; also not forgotten is how the spirit of America was awakened that day and citizens came forth to volunteer their services. President George W. Bush harnessed this spirit of volunteerism with the Citizen Corp program.

CERT is part of that program.



CERT Current Training Schedule

Shelter Fundamentals	March 10th & 12th 7PM - 9PM	Mahwah
Shelter Fundamentals	March 28th 8:30AM - 12:30PM	Mahwah
CPR Recertification	April 14th 7PM - 9PM	Fair Lawn
CPR Certification	April 27th 7PM - 10PM	Fair Lawn

REGISTRATION:

Email Tom Metzler at metzler@bcoem.org

All classes are offered on a first come, first serve bases.



Volunteer Force

by Margaret Steen (Reprint from Emergency Management Magazine)

There are times during disasters when first responders will be overwhelmed and unable to do all that needs to be done without help from volunteers, who will do much of the work either in an organized fashion or spontaneously.

Volunteers are an important cog in disaster response, and developing a volunteer program before disaster strikes can be invaluable. It allows emergency responders to focus on some of the major tasks as volunteers handle easier work like traffic control and light search and rescue.

A good volunteer program needs up-front planning and recruitment, and it needs to keep volunteers engaged in between emergencies. A first step for local emergency management professionals who think they need a volunteer program is to decide what they want volunteers to do.

“Some people just want to train the local community to be sure people know what to do in an earthquake [or other disaster],” said Suu-Va Tai, a disaster program specialist with California Volunteers. “They’re just training them-they don’t see them again. . .”

Once the list of volunteers is developed, it is important to keep participants engaged. If volunteers are recruited for just a one-timer event, they may not respond the next time unless they’re continually engaged, Tai said. “You need to find different activities to engage with them and keep them training”.

It’s helpful to have volunteers working regularly, and it’s critical to know both how to activate the volunteers and what they will do when disaster strikes.



**Bergen County
Office of Emergency Management**

Lt. Matthew Tiedemann, CEM - Coordinator
 Ronald Salzano, Deputy Coordinator
 Matthew Ziemkiewicz, CHS, Deputy Coordinator
 Thomas Metzler, CEM, Deputy Coordinator

Barry Leventhal, Training & Operations
 Elizabeth Stagg, Flood Plain Coordinator
 Maria Toscano, Administrative Assistant

Phone: 201-785-5757
 Fax: 201-785-8571

*Does your CERT Team
 have a story for a
 future issue of
 The Civilian Responder?*

*E-mail it to:
 metzler@bcoem.org*

Next Issue:

- 2015 CERT Survey
- CERT Trailer Challenge
- CERT ID Cards
- Feature CERT Team
- Minutes from the Municipal CERT Coordinators Meeting



Team Photo Page



**Ho-Ho-Kus CERT
 Receives Trailer**



**Fair Lawn CERT
 Rescue/Medical Drill**



**Billboard on Route 17
 in Rochelle Park**



**Waldwick CERT with their
 new CERT Trailer**



**Church of God CERT
 Active Shooter Drill**



County Shelter Exercise



Islamic 5K Walk

Bergen County Office of Emergency Management - CERT

The Civilian Responder

Volume 1, Issue 2 ~ April 2015



Ninety Attend Shelter Training

On March 10th Bergen Counties Municipal CERT Teams kicked off their 2015 continuing education program with the American Red Cross four hour Shelter Fundamentals Class.

Ninety CERT members representing seventeen Municipal CERT Teams participated in the training program. Two classes were scheduled, one during the weeknight evening hours of March 10th and March 12th and a second class on Saturday, March 28th.



CERT Members taking the Shelter Fundamentals Class, can now describe the tasks of a shelter worker throughout the opening, organizing, operating and closing phases of a shelter operation; describe how to complete the appropriate registration forms and make referrals for additional services; explain how to set up a welcoming reception and registration area, explain how to set up and monitor a dormitory environment that ensures resident safety and comfort, know how to set up food distribution areas and monitor consumption; describe the importance of information sharing in a shelter environment and explain the steps required to return the shelter to its pre-disaster condition.

Basic CERT Class 1501 Graduates

CERT Basic Training Class 1501 graduated on April 10th with twenty eight new CERT members representing the communities of Franklin Lakes, Ho-Ho-Kus, Montvale, Oakland, Ramsey, Waldwick, Washington Township, Westwood, Wyckoff and Upper Saddle River.

A policy change has been implemented which no longer makes it a requirement to complete the CERT program in order to participate in the CART program. Training in both programs is encouraged.

Registration is now open for the Fall 2015 class which will begin in September. Class 1502 will be expanded to a ten lesson program.

INSIDE THIS ISSUE

Featured CERT Team	2
CERT Survey	2
CERT Size Up	3
Newsletter Update	3
Training Schedule	3
Your CERT Photo's	4

Featured CERT Team: Ho-Ho-Kus CERT

by Stanley Kober

In January 2005, a town-wide presentation was made about CERT and the Borough's CERT unit was born. Since then, Basic CERT classes have been conducted in the Borough and at the Bergen County Law and Public Safety Institute (BCLPSI) in Mahwah. In addition, numerous in-service and advance classes (training above the standard classes provided in the Basic course) on electrical wire safety, hazardous materials, shelter operations/management, CPR, animal response team training, terrorism awareness, traffic control, gang awareness, and many others have been provided and conducted. Most recently, the Ho-Ho-Kus CERT members have had instruction provided not only by the Bergen County Office of Emergency Management, but by the Bergen County Prosecutor's Office and Sheriff's Department; Bernard Kerik (former NYPD Commissioner); NJ State Police; FEMA; and others.



Members have participated in CERT exercises at Picatinny Arsenal in Sussex County, CERT Day events at BCLPSI, decontamination drills at a local hospital, local emergency shelter operations, military funerals, County events at Overpeck Creek Park, and many other activities. Ho-Ho-Kus CERT hosted a joint two day exercise with Mahwah CERT which covered day time and night time operations, in which the CERT personnel from both teams applied their skills learned in many classes, to "on-the-ground" events in the woodland and marshland of the Ho-Ho-Kus "16 Acres" and East Park on the Saddle River. In addition, the joint operation was conducted using the nationally required Incident Command System (ICS) structure and comprised of numerous inter-agency operations with organizations such as the Ho-Ho-Kus OEM, Police and Fire Departments, and Ambulance Corps; Bergen County OEM; Mahwah OEM; and others.

A major enhancement to the Ho-Ho-Kus CERT mission came in 2013 when the Team implemented amateur radio capabilities at the Ho-Ho-Kus Emergency Operations Center (EOC) and for the CERT trailers and pickup truck. The unit also has an FCC approved license for an amateur radio club with the call sign W2HHK for wireless communications in accordance with FCC Title 47 CFR Part 97. The station also is a key player in R.A.C.E.S. (Radio Amateur Civil Emergency Service), a national civil defense communications service implemented in Bergen County as required by the NJ State R.A.C.E.S. Plan.

The team now (2015) comprises 55 members, made up of six (6) Teams led by Team Leaders (TL). Members have assisted in evacuation drills, an active shooter incident, for emergencies like Superstorm Sandy and other storms and incidents, and numerous other events in Ho-Ho-Kus, the County, and other Municipalities as well as at the NJ State level. See our website at <http://www.ho-ho-kuscert.org/>

Bergen County Emergency Management-CERT Survey

Will you be a Survey Monkey? In the near future your team leaders will be electronically sending you a ten question survey utilizing Survey Monkey software. Bergen County Emergency Management is reviewing some aspects of the CERT program with regard to training for 2015 and beyond. To accurately determine the best way to facilitate training programs, this quick survey has been created.

"Will you be a Survey Monkey?"

Please be assured that all personal survey questions will be kept confidential and will only be used to improve local and county CERT training programs.

All CERT Team members are encouraged to participate in the survey as your personal input as it pertains to CERT training is very important to the Bergen County OEM staff.

Survey results will be published in a future addition of The Civilian Responder. This is an opportunity for you, the CERT membership, to play a crucial role in what type of training will be made available for the remainder of 2015 and also to offer insight to the management team on how we can improve the CERT program.



CERT Size Up...

The Nine Steps of CERT Size Up:

Gather facts - What has happened? How many people appear to be involved? What is the current situation?

Assess and communicate the damage - Try to determine what has happened, what is happening now, and how bad things can really get.

Consider probabilities - What is likely to happen? What could happen through cascading events?

Assess your own situation - Are you in immediate danger? Have you been trained to handle the situation? Do you have the equipment that you need?

Establish priorities - Are lives at risk? Can you help? Remember Life Safety is your first priority.

Make decisions - Base your decisions on the answers to Steps 1 through 5 and in accordance with the priorities that you established.

Develop a plan of action - Develop a plan that will help you accomplish your priorities. Simple plans may be verbal, but more complex plans should always be written.

Take action - Execute your plan, documenting deviations and status changes so that you can report the situation accurately to first responders.

Evaluate progress - At intervals, evaluate your progress in accomplishing the objectives in the plan of action to determine what is working and what changes you may have to make to stabilize the situation.

*The Nine Steps of CERT Size Up is rewritten from the CERT Basic Training Manual developed by Perform Tech
January 2011*

The Civilian Responder, your newsletter...

In order to better inform members of our municipal, county and private sector CERT Teams the Bergen County Office of Emergency Management has introduced your newsletter, The Civilian Responder.

Where we go with this publication from this point on will depend on you our volunteer membership. Staff is prepared to make this newsletter a monthly publication being release electronically on the 15th of each month provided our CERT partners provide stories about their team accomplishments, contributions of their membership, activations and training being offered at the local level.

- **Has your team been called out to assist with a missing child? Tell us about it!**
- **Has your team recently completed in house training? Tell us!**
- **Has your team had a social event, monthly meeting, has one of your members be recognized for service to the community? Tell us about it!**

Send us your stories, your pictures, your accomplishments, your concerns. We will share them in future issues of The Civilian Responder. Information sharing and communication is part of the CERT mission. Lets work together to better prepare for our next activation!

CERT Current Training Schedule

CPR Recertification	April 14th 7pm - 9pm	Fair Lawn
CPR Certification	April 27th 7pm - 10pm (Registration Closed)	Fair Lawn
Traffic & Crowd Control	April 27th 7pm - 9pm	Ho-Ho-Kus
Radio Communication	May 11th & 13th 7pm - 9pm	Mahwah
Radio Communication	May 16th 9am - 1pm	Fair Lawn
Terrorism Awareness	May 18th 7pm - 9pm	Ho-Ho-Kus
Fire Extinguishers	June 15th & 17th 7pm - 10pm	Mahwah

REGISTRATION:

Email Tom Metzler at metzler@bcoem.org - All classes are offered on a first come, first serve bases.



Team Photo Page

Bergen County Office of Emergency Management

Thomas Metzler, CEM, Director

Matthew Tiedemann, CEM, Coordinator

Ronald Salzano, Deputy Coordinator

Matthew Ziemkiewicz, CHS, Deputy Coordinator

Barry Leventhal, Training & Operations

Maria Toscano, Administrative Assistant

Phone: 201-785-5757

Fax: 201-785-8571

*Does your CERT Team
have a story for a
future issue of
The Civilian Responder?*

*E-mail it to:
metzler@bcoem.org*

Next Issue:

- 2015 CERT Survey
- CERT Trailer Challenge
- CERT ID Cards
- Fair Lawn CERT Team
- Minutes from the Municipal CERT Coordinators Meeting



American Red Cross Shelter Fundamentals



Fair Lawn CERT attends terrorism with Lyndhurst CERT



Class 1501 Fire Extinguisher Training

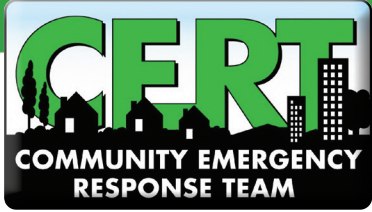


"I present to you, BASIC CLASS 1501"

Bergen County Office of Emergency Management - CERT

The Civilian Responder

Volume 1, Issue 3 ~ May 2015



Coordinators Meeting Minutes

On Thursday, March 12, 2015 the Local CERT Team Leaders meet in Mahwah. Reporting to the CERT Leadership was County Coordinator Matt Tiedemann, former CERT Director Gidget Petry and County OEM Director Tom Metzler.

Among the topics discussed was the revamping of the basic CERT training class. It is no longer required to complete the CART program in order to join CERT and the basic training class will be increased to ten weeks in order to provide more practical training in first aid, fire and rescue.

It was announced that an aggressive training program is going to be launched and as we all know we have had training in sheltering, CPR, traffic and crowd control in recent weeks with classes planned in fire suppression, terrorism awareness and communication in the near future.

OEM Director Metzler discussed a long term plan for CERT to be reorganized with an elected CERT Chief with the county divided into a north, central and south region with the towns evenly assigned to each region. This concept would allow for better command and control of the organization. Additionally there was discussion about CERT ID cards and the new newsletter

It was also announced that the OEM leadership was developing an online survey to get input from our CERT Team membership.

CERT IDENTIFICATION CARDS

Based upon early results from our CERT Survey 32% of the current CERT membership does not have a current identification card. Even more disturbing is the fact that 28% of our CERT membership have never been issued a card.

Emergency Management Director Metzler has indicated that these statistics are unacceptable and has made the issuing of ID cards to CERT members an immediate priority.

In order to receive your ID card you must first complete the card application form and return it to OEM via email.

Photographs for ID cards will be taken on May 16 between the hours of 9AM and 1PM and on May 27 from 9AM to 5PM at the PSOC, 285 Campgaw Road, Mahwah, NJ. ID card applications are available through your local CERT Team Leader.



INSIDE THIS ISSUE

Featured CERT Team	2
Skywarn Program	2
Skywarn Continued	3
Training Schedule	3
Your CERT Photo's	4
Fair Lawn CERT	4

Featured CERT Team: Fair Lawn CERT

by Nancy Brouca

The Fair Lawn CERT Team was established in 2002 as part of an inter local team with the Borough of Paramus and the Village of Ridgewood. Fair Lawn graduated 17 citizens in that class, 12 of who are still active today. Over the past 13 years, Fair Lawn CERT has grown to a total membership of 40.

The Fair Lawn CERT Team was one of the first teams in New Jersey to receive a CERT trailer from the State. This CERT trailer along with a Shelter trailer house equipment utilized by the team during exercises, incidents and disasters.

The Fair Lawn CERT team is structured in accordance with incident management span of control. Five squads of members comprise the CERT team with each squad being lead by a Squad Leader. The CERT leadership team of the CERT Leader, Assistant CERT Leader, Secretary and Training Officer comprise the sixth squad. The team recently adopted By-Laws that have helped in establishing a more structured organization, similar to other emergency service organizations.

The CERT team works in conjunction with other Fair Lawn emergency services agencies including the Ambulance Corps, Emergency Management, Rescue Squad, Fire Department, Police Department and the Auxiliary Police. The team also assists the Fair Lawn Health Department and Recreation Department at scheduled events. The team actively assists with outside organizations including the Board of Education, the Fair Lawn Rotary Club and the Knights of Pythias organization.

The team's training includes shelter operations, search and rescue operations, communications, traffic, first aid, blood borne pathogens, hazardous communications, fire safety, drags and carries, natural gas emergencies, CPR and AED, CART and incident management training. Trainings are conducted monthly, at a minimum with additional training scheduled as appropriate. Recently, seven (7) CERT members completed a course entitled American Sign Language for First Responders. *(Continues on Page 4)*

SKYWARN Spotters Who, What and Why?

by George Sabbi

Have you ever heard this said on a News/Weather broadcast? "Local Spotters are reporting (a Funnel Cloud, a Tornado, Hail, etc)" If you have, I bet you wondered, 'Just who are those 'Spotters' and why do they receive a mention and credence on News and Weather reports?'

SKYWARN Spotters, just like CERT Team members, are volunteers, trained by the National Weather Service, to provide accurate and timely observations of developing, occurring and/or previously occurred Severe Weather. Their training gives them the knowledge to properly identify key atmospheric situations (such as recognizing the distinctions among Shelf Clouds, Wall Clouds, Funnel Clouds, etc) as well as how to quickly, clearly and precisely communicate their observations directly to the National Weather Service by phone, internet or on amateur radio.

A major part of the National Weather Service's Mission is to protect the nation's life and *(Continues on Page 3)*

SKYWARN *Continued from page 2*

property. SKYWARN Spotters assist in that mission throughout the entire country. Nationwide, there are currently over 200,000 NWS Trained SKYWARN Spotters. In our local area (Bergen County is covered by the NWS New York NY) there are over 1,500 active Spotters; and speaking of Bergen County, we now have over 350 NWS Trained SKYWARN Spotters of record! Among these dedicated volunteers are many of your fellow CERT Team Members as well as amateur radio operators, Public Safety and OEM Officials and others from all walks of life.

Why are SKYWARN Spotter Reports important for accurate forecasting of Severe Weather? Well, for one, Spotters serve as the on scene trained eyes and ears for NWS Meteorologists. In many instances the Meteorologists are located as much as 50-100 (or more) miles distant from where the actual weather events are happening. Through this network of Trained SKYWARN Spotters, all knowing exactly what and when to report (Spotters are able to directly contact an on duty NWS Meteorologist any time of the day or night as all NWS Forecast Offices are staffed 24/7/365) the NWS is provided with timely observations, that many times are key to the issuance of actual Severe Weather Warnings. Even with the many recent advances in Satellite and Doppler Radar data, those technologies alone do not always provide the NWS forecasters with everything they need to know in order to make an important Warning decision. The NWS through their entire coordinated system of technologies, along with their network of Spotters, who are in the field providing direct ground truth observations, work together to provide a consistently high level of accuracy for Weather Advisories, Watches and Warnings. All done to ensure your and our nation's Weather Safety.

Recently (April 21), Bergen County was the proud host to a 2015 SKYWARN Spotter Training Class (in conjunction with our Partners in the Bergen County OEM). All 110 in attendance received their personal 2015 SKYWARN Spotter ID Cards. SKYWARN Training (and systematic retraining, required to be done on a 3 year basis) usually takes place in the Spring of the year; be sure to keep watch for announcements of any future Classes.

More information on the area's SKYWARN Program can be found on the BergenSkywarn Website at: www.bergenskywarn.org as well as the BergenSkywarn Facebook presence (facebook.com/BergenSkywarn) and Twitter (@WX2BC - twitter.com/WX2BC). If you have any questions on SKYWARN please send an email to skywarn@bergenskywarn.org

CERT Current Training Schedule

Radio Communications	May 16th 9am - 1pm	Fair Lawn
Terrorism Awareness	May 18th 7pm - 9pm	Ho-Ho-Kus
Fire Extinguishers	June 15th & 17th 7pm - 10pm	Mahwah
	June 27th 8:30pm - 12:30pm	Mahwah

REGISTRATION:

EMAIL: Evelyn Powell at powell@bcoem.org - All classes are offered on a first come, first serve bases.





Bergen County Office of Emergency Management

Thomas Metzler, CEM, Director

Matthew Tiedemann, CEM, Coordinator

Ronald Salzano, Deputy Coordinator

Matthew Ziemkiewicz, CHS, Deputy Coordinator

Barry Leventhal, Training & Operations

Maria Toscano, Administrative Assistant

Phone: 201-785-5757

Fax: 201-785-8571

*Does your CERT Team
have a story for a
future issue of
The Civilian Responder?*

*E-mail it to:
metzler@bcoem.org*

Next Issue:

- Survey Says
- Training Report
- CERT ID Cards
- New Equipment



Team Photo Page



Ridgewood CERT sharing information on Earth Day



Inter-Local Class #1 May 15, 2003

Fair Lawn *Continued from page 2*

The team took part in the Bergen County Shelter Exercise at the Police and Fire Academy by setting up and opening the shelter, registering the participants and operating the shelter for the first six hours.

Fair Lawn CERT operates the Emergency Operations Center (EOC) Call Take Center during incidents. During disasters, the CERT team is utilized for welfare checks on residents in the community that are identified on the Special Needs Registry. The CERT team were active responders during Hurricane Irene and Superstorm Sandy assisting with telephone calls, handing out clean up information and clean up kits and damage assessment reports.

Fair Lawn CERT is committed to training and enhancing our skills in case of an emergency. We know that is the only way we will be prepared and able to respond to any tasks we are trained and asked to perform. Fair Lawn CERT operates by the mottos: "There is a job for everyone" and "Be Part of the Solution, Not Part of the Problem."

Bergen County Office of Emergency Management - CERT

The Civilian Responder

Volume 1, Issue 4 ~ June 2015



RIVER VALE CERT CONDUCTS BIO-HAZARD POD DRILL

The CERT drill was scheduled for May 16th, and the instructions were “rain or shine” so, of course, in the morning it was raining! By drill time at 1 PM, it was heavily overcast and humid. Fourteen members of the River Vale CERT team were about to set up a Point of Distribution (POD) to distribute prophylaxis medication for its residents in case of a bio-hazard event, for the first time.

Several years ago, the Bergen County Health Department, in conjunction with County OEM, held several meetings describing POD operations and asking if any local team wanted to be designated as a POD location. The River Vale CERT Team wholeheartedly agreed to take on that responsibility. Five large grey totes with POD equipment arrived and was stored in the OEM office. They contained everything from paper, pens, clipboards and a bullhorn, to medical gloves, masks, disinfectant wipes and bio-hazard trash bags. At a meeting night, the equipment was displayed for the members and plans for the drug distribution set-up were discussed.



The County POD plan required more than 80 people to operate a walk-up point of distribution.

Continued Page 2

WYCKOFF CERT - MEMORIAL DAY

by Vincent A. Volpe - Wyckoff CERT Memorial Day Parade Coordinator

The Wyckoff Community Response Team members have been called upon to serve in numerous ways over the years. Our CERT group has been deployed for various Emergency situations when and where our services are needed. We expect to be deployed and are prepared to serve and assist our community and first responders any way we can. After all, that's what we volunteered to do. We have also been called into service to assist, as well as participate, in more festive and non-emergency events such as Wyckoff Day, The Wyckoff Shredfest, YMCA Functions, Wyckoff Fireworks Celebration, Dog and Cat Rabies Vaccination Day, Wyckoff/Midland Park Health Fair as well as County Sponsored Events and Training Exercises.

Continued Page 2

SPECIAL NOTICE:

CERT ID CARD PICTURES WILL BE TAKEN ON THURSDAY,
JUNE 25TH BETWEEN THE HOURS OF 5PM & 9PM IN
MAHWAH - NO APPOINTMENT IS REQUIRED

INSIDE THIS ISSUE

Wyckoff CERT	2
River Vale CERT	3
Training Schedule	3
Ready to Deploy ?	4

WYCKOFF CERT *continued from page 1*

Additionally, Wyckoff CERT has and continues to actively participate in the Annual Wyckoff Memorial Day Parade.

At the Wyckoff Memorial Day Parade, Wyckoff CERT has played a prominent role, with expanded responsibility over the years. Ironically, our participation is not as marchers but ensuring that the parade be safe and organized for marchers and parade route observers. CERT's responsibility has broadened over the years. At first, we just helped in getting those participating lined up so the parade could start on time. Since that beginning, we have been invited to sit on the Parade Committee and participate in the organizational meetings which begin in February. The Parade Committee welcomes our feedback, from the prior year's parade, to include suggestions improving the efficiency and safety for the upcoming parade. CERT starts our parade activity in late April by soliciting CERT Volunteers for the parade. We usually have between 10-15 volunteers, pretty good considering it's a holiday weekend.



On the Sunday evening prior to the Parade, we begin preparation with our volunteers meeting in the local church's large parking lot which is the staging area for the parade. We spend a few hours preparing the Staging Area, putting out signs, traffic cones and wood barricades as well as stringing out yellow tape to help in the lineup for the next day. We also assign stations and responsibilities to our CERT volunteers so everyone knows their task and responsibility.

On the Monday morning of the parade, we begin by setting up some tents for cover (it can be very sunny and hot), ensure water stations are in place, Porta-Pottys are accessible and we're ready for the marchers.

Marchers are sort of a misnomer. Yes, we have many marchers on foot but it's the other participants that really contribute to the challenge. Usually, we will have three marching bands in full uniform, various types and sized Military Vehicles with personnel, Floats, Antique Cars, Fire Trucks, Emergency Vehicles and First Responders from multiple towns, along with the Girl Scouts, Boy Scouts, Baseball Players, individual groups, clubs and area businesses. It's no wonder that the 2014 Wyckoff Memorial Day Parade was selected as the "Best in Bergen County" by a prominent New Jersey Magazine. Our diverse training sure comes in handy when dealing with all this wonderful participation.

The CERT groups' major objectives are the safety of all (participants as well as observers along the route), ensuring the parade gets off on time and in the correct line of march. All of this was accomplished within a one and a half hour window on an exciting Memorial Day morning. We sure are happy when we see the last marchers out of the staging area onto the parade route safely, not because our job is complete, but that our final tasks begin. The CERT group now splits up into two groups one handles the cleanup of the staging area, collecting cones, traffic horses, and signs, etc. for pickup and storage for next year. The other group rushes to the parade's end so they can assist in the safe breakup of the parade by directing traffic, marchers, those rushing to get to their next destination which for some is enjoying free beverages and hot dogs at the firehouse. This seems like the time we do some of our best work.... "keeping everyone safe".

The Wyckoff Community Emergency Response Team proudly volunteers on Memorial Day to honor and thank those who have served and are serving our country, community and others everywhere. We are honored to be called upon to assist so that those who should be honored can participate and be recognized for their service on Memorial Day.

The Team would like to thank the Fire Police for their help with the Parade traffic control on the parade route, the Wyckoff Memorial Day Parade Committee and the Town of Wyckoff for their efforts in making this Parade such a successful event.

River Vale POD Drill *continued from page 1*

Knowing that we didn't have 80 people, or an area with enough parking to allow people to walk up, we got to work and designed a "drive-up" POD system. In conjunction with the River Vale Police Department, the location we chose was Holdrum Middle School where we could control vehicle ingress and egress and meet the requirements for secure storage of medications as well as having copying facilities, telephone and electrical service.

Since getting the school grounds for a drill was nearly impossible due to sporting events and numerous after school activities, CERT Co-Captains and Deputy OEM Coordinators Bill Peters and Linda Wayne decided to set up a mini-POD drive-through drill on the grounds of the River Vale Community Center. When announcing the drill, members were only told that we would be setting up a POD and they would be going into it "cold".

Bill & Linda went to the site the week before and discussed how the POD would work. A diagram was made on the easel from our CERT trailer that would be used to brief our members. Our CERT trailer was transported to the scene by the DPW. Two local newspapers were notified and had photographers on hand to document the exercise.

At 1 PM the members arrived promptly. A briefing was held and duties assigned. The following positions were established and manned:

1. A CERT member in compliant traffic vest with STOP sign, stopped vehicles coming into the POD and gave them a color-coded flyer instructing them where to go and conducted a brief interview as to whether any member of their household was sick or had special needs for one drug or the other. Color coding was established with RED being directed to the medical tent, GREEN for people who are healthy and to receive Doxycycline (Doxy) and YELLOW for families with special medical conditions who needed to receive Ciprofloxacin (Cipro).
2. At the next stop, a second CERT member provided an information sheet with Questions & Answers about the drugs being distributed.
3. A "Red Zone medical tent" was set up away from the distribution point to simulate the handling and transport of sick individuals or those displaying the effects of the bio-hazard. Members at that location wore red vests provided in the POD kit.
4. A Green distribution table was set up to distribute Doxy and a dosing information sheet to those who were healthy. Members at that position wore green vests.
5. A Yellow distribution table was set up to distribute Cipro and the information sheet to those whose family had other health issues. Those members wore yellow vests.
6. Our CERT trailer was designated as the logistics area. The trailer was marked with yellow caution tape and "Do Not Enter Secure Area" signs posted. Two members with blue vests handled inventory and distribution to the the green and yellow tables of the simulated drugs, which were actually plastic checker pieces! Their instructions were to notify the supervisors when their supply got down to 25% so additional supplies could be secured from the County. In a real operation, this location would be secured by police officers.
7. The supervisors wore white vests for identification, if a problem occurred.

From the time the briefing was held until the first car approached was approximately 30 minutes. With a minimum of instruction, River Vale CERT members followed the briefing and had the POD operational. Family members drove through and were given instructions and simulated drugs. One was even detained as a medical risk!

After being satisfied that we could get a drive-through POD operational, the members broke it down and secured all the equipment. The CERT trailer was extremely helpful as we utilized traffic cones, table, chairs, medical equipment, generator, cord reels, lights and other assorted pieces of equipment.

A post incident critique was held on-scene and several suggestions were received from the CERT members participating. All agreed that the drive-through POD concept was a valid one and the drill was an overwhelming success. The success of this exercise was due to two important factors: 1) advanced planning and 2) motivated CERT personnel who were able to follow general instructions and put the plan to work.

CERT Current Training Schedule

Firefighting Fundamentals	June 15 & 17 7pm - 9pm	Mahwah
Firefighting Fundamentals	June 27 8:30am - 12:30pm	Mahwah
CERT Coordinators Mtg.	June 18 7:30pm	Mahwah
Radio Communications II	October 26 7:30pm	Ho-Ho-Kus

REGISTRATION:

EMAIL: Evelyn Powell at powell@bcoem.org - All classes are offered on a first come, first serve bases.



Bergen County Office of Emergency Management

Thomas Metzler, CEM, Director

Matthew Tiedemann, CEM, Coordinator

Ronald Salzano, Deputy Coordinator

Matthew Ziemkiewicz, CHS, Deputy Coordinator

Barry Leventhal, Training & Operations

Evelyn Powell, Executive Assistant

Phone: 201-785-5757

Fax: 201-785-8571

*Does your CERT Team
have a story for a
future issue of
The Civilian Responder?*

*E-mail it to:
metzler@bcoem.org*

Next Issue:

- 2015 CERT Survey



Are You Ready for Deployment?

by Dawn J. Byrnes-Miklas - Wyckoff CERT

Recently, I attended the CERT Communications Certification class offered which covered the hand radio communications process. For those of you that were unable to attend this class, it was informative, practical and fun. It is an instructor led course that was delivered through a blended learning approach. The instructor Neil Shore, utilized a variety of tools, such as a PowerPoint presentation, hand radios, a Jeopardy game and a number of emergency scenarios which had transpired over the years.

The training reviewed the communications "process" and drives home how important the relaying of needs and messages are to not only a successful event, emergency or disaster, but also to avoid costly mistakes. This hit home with me, because I possess a business process training background whereby, my mantra is to "get it right on the front end"...and it begins with communication.

The practical part of the training took place the second evening and the CERT Team Leader had an opportunity to practice deployment of the hand radios. This involved recording (identifiers), and distribution of the radios, along with setting up the call names and the frequency settings on the radios. Since these radios are typically loaned out from Bergen County to CERT during an event or an emergency, it is important that all radios are accounted for and returned. This also applies to those communities that own their own radios.

The Team Members had an opportunity to practice accurately sending or receiving a message ensuring communication was understood. The importance of listening and communicating clearly and succinctly is key. The teams learned what is referred to as the 4C's...Connect, Convey, Clarify and Confirm. It may sound easy to clearly communicate needs or what you are encountering at the time, but not so much. Especially, if you couple this with a live incident that is dangerous, volatile or life threatening. We had a second practical exercise whereby, a photo was projected and when it was your turn as a Team Member, you would radio in what you observed and what was needed at the emergency site immediately.

What will you walk away with after attending this class? A comfort level that when actually faced with the real thing, you will be able to effectively react. This targeted training class is just one of many CERT training classes being offered to second responders and there is more to follow. Tom Metzler, Bergen County's OEM Director wants to provide more practical training, to prepare us for the infrequent emergencies. Due to the fact that CERT volunteers have limited real opportunities to practice what they have learned, we need these type of training classes in order to be prepared when called upon. CERT communities can also coordinate their own periodic trading exercises to practice. The CERT volunteers that attended also received a comprehensive tour of the EOC Communications Center where assistance is dispatched.

I highly suggest that when this class is offered again, you attend. All attendees received a Certificate of Achievement.

Bergen County Office of Emergency Management - CERT

The Civilian Responder

Volume 1, Issue 5 ~ July 2015



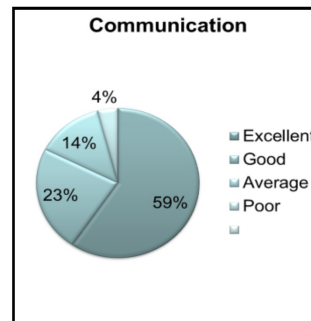
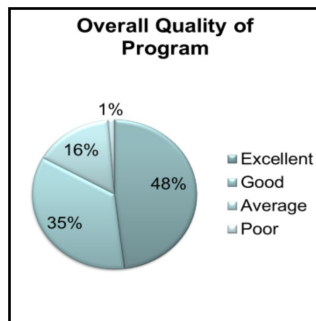
Bergen County CERT Members Survey Results

Members of the Municipal CERT Teams in Bergen County participated in an online “Survey Monkey” survey recently to assist Emergency Management administration in the planning of future training events, equipment purchases and overall operation of the CERT Teams. Bergen County OEM Director Tom Metzler was asked if the survey presented any real surprise results. Tom indicated that he was shocked that 27.71% of those responding to the survey have never been issued an ID card.

Please indicate which training you have received as a CERT member from your municipality, county, state or other adult learning program. Please check all that apply:

	0%	10%	20%	30%	40%	50%	60%	70%	80%	90%	100%		
BASIC CERT TRAINING	[Green bars from 0% to 100%]											98.81%	
CART TRAINING	[Yellow bars from 0% to 40%]												44.05%
COMMUNICATIONS	[Yellow bars from 0% to 40%]												42.88%
COMMUNITY RELATIONS	[Red bars from 0% to 20%]												16.67%
EOC ASSISTANT	[Yellow bars from 0% to 40%]												27.38%
FIRE TRAINING	[Yellow bars from 0% to 40%]												28.57%
FIRST AID REFRESHER	[Yellow bars from 0% to 40%]				[Yellow bars from 40% to 50%]								38.10%
INCIDENT COMMAND	[Yellow bars from 0% to 40%]												42.86%
RESCUE REFRESHER	[Red bars from 0% to 20%]												16.67%
SHELTER MANAGEMENT	[Yellow bars from 0% to 40%]												41.67%
SHELTER OPERATIONS	[Yellow bars from 0% to 20%]		[Yellow bars from 20% to 50%]									53.57%	
STAGING	[Red bars from 0% to 20%]		[Red bar from 20% to 30%]										23.81%
TERRORISM AWARENESS	[Yellow bars from 0% to 40%]												44.05%
TRAFFIC CONTROL	[Yellow bars from 0% to 40%]												40.48%
TRANSPORTATION	[Red bar from 0% to 10%]												5.95%

How You Rated the CERT Program



INSIDE THIS ISSUE	
CERT Survey Results	1
Cliffside Park CERT	2
Training Schedule	3
Basic CERT Class Schedule	4

Featured CERT Team: Cliffside Park CERT

CERT and CART Members Assist at Large Fire

by Anthony Frato

On November 18th 2014, the Borough of Cliffside Park emergency services battled a large fire that spread and affected other buildings. At approximately 5:00pm, a fire that was later deemed accidental started at 223 Walker Street, which was under construction. High wind conditions spread the fire to 314 First Street, 310 Cliff Lane, and 325 Palisade Avenue. A condominium located at 323 Palisade Avenue, was also affected sustaining minimal damage.



OEM Director Steward De Vito placed a call out to all OEM/Cert and Cart members to respond to the fire scene. Once the scene was assessed by OEM Director De Vito, a command post was set up at 305 Walker Street. At the scene CERT members assisted with rehab, supplies, crowd control and identifying hazardous conditions due to ice forming on the roadway and sidewalks. CERT members also assisted in shelter operations along with the American Red Cross and transportation of victims from the fire scene to the shelter.

CART members established an animal shelter for the pets that were affected and displaced by the fire. CERT and Cart members alongside with the Public Safety Departments effectively managed and controlled a very hazardous event. As OEM Director, situations such as this show how valuable the volunteers of CERT AND CART are when events such as this take place.

CERT Survey Results continued.....

In the past 18 months how many times have you been contacted for:

	0%	10%	20%	30%	40%	50%	60%	70%	80%	90%	100%		
MEETINGS												12.05%	Never
												3.61%	Once
												28.92%	2 to 5 Times
												55.42%	5 to 10 Times
TRAINING												12.05%	Never
												2.41%	Once
												46.99%	2 to 5 Times
												39.76%	5 to 10 Times
EXERCISES												20.25%	Never
												16.46%	Once
												37.97%	2 to 5 Times
												26.58%	5 to 10 Times
EMERGENCY ACTIVATIONS												46.15%	Never
												19.23%	Once
												29.49%	2 to 5 Times
												6.71%	5 to 10 Times

YOU, Are CERT.....Survey Responses

- “I think that the program provides an excellent opportunity for community members to help their community, as well as help themselves and their family. The leadership and members of my CERT team are knowledgeable and friendly. I feel the training they offer is adequate.”
- “As part of the CERT Team I would like to have more meetings and more info of the new training and also I am from the ##### group and we don't receive much info at all.”
- “I like helping out my community. I don't like being taken advantage of ie. Working for free while others are making a profit.”
- “We could use more regular town cert group training exercises or “bonding” events to become familiar with the other members. I don't believe it is appropriate to use CERT personnel to assist private, profit making ventures i.e. sporting events and the like. Those things should be left to paid security staff. Our focus should be assisting during emergencies and relief for our police forces where they may have insufficient staff”
- “I would like more intense training in most areas. If I am going to give the time, I would like to really get a hands on training (again, more advanced).”

CERT Current Training Schedule

CERT BASIC Training	(Starts) September 9, 2015	7 pm	Mahwah
First Aid Refresher	(TBA) September 2015	7 pm	Paramus
Shelter Fundamentals	September 12, 2015	9 am	Fort Lee
Shelter Fundamentals	September 16, 2015	6 pm	Fort Lee
Communications II	October 26, 2016	7:30 pm	Ho-Ho-Kus



REGISTRATION:

EMAIL: Evelyn Powell at powell@bcoem.org - All classes are offered on a first come, first serve bases.

Waldwick CERT Assists at 5K Walk

The Waldwick CERT Team assisted the Waldwick Chamber of Commerce at their Eighth Annual 5K run / 1 mile walk on May 3, 2015. CERT members provided directions and guidance for runners, walkers and spectators. A great fun and safe day was had by all attending.





**Bergen County
Office of Emergency Management**

Thomas Metzler, CEM, Director
 Matthew Tiedemann, CEM, Coordinator
 Ronald Salzano, Deputy Coordinator
 Matthew Ziemkiewicz, CHS, Deputy Coordinator

Barry Leventhal, Training & Operations
 Evelyn Powell, Executive Assistant

Phone: 201-785-5757
 Fax: 201-785-8571

*Does your CERT Team
 have a story for a
 future issue of
 The Civilian Responder?*

*E-mail it to:
 metzler@bcoem.org*

Next Issue:

- 2015 CERT Survey
- CERT Trailer Challenge
- CERT ID Cards
- Featured CERT Team
- Minutes from Municipal CERT Coordinators Meeting



**BASIC CERT CLASS
 SCHEDULED**

Do you have family and friends interested in making their families and their communities a safer place to live? Invite them to join the next Basic CERT Training Class scheduled to begin on Wednesday, September 9, 2015. This will be the first training class with the expanded practical training in fire and first aid and students will be tested on practical hands-on scenarios. Classes will be held once a week, on Wednesday evenings. Why not ask a friend to join today? Share the fun.....

Date	Topic
09/09/15	Wednesday CERT & Disaster Preparedness
09/16/15	Wednesday ICS 100 / 700
09/23/15	Wednesday HOLIDAY
09/30/15	Wednesday Disaster Medical Operations Classroom
10/07/15	Wednesday Disaster Medical Operations Practical
10/14/15	Wednesday Terrorism Awareness
10/21/15	Wednesday Disaster Psychology
10/28/15	Wednesday Disaster Fire Suppression PowerPoint
11/4/15	Wednesday Disaster Fire Suppression Practical
11/11/15	Wednesday Light Search & Rescue Operations
11/18/15	Wednesday Final Exam/Practical Exercise
12/2/15	Wednesday Graduation



Bergen County Office of Emergency Management - CERT

The Civilian Responder

Volume 1, Issue 6 ~ August 2015



SO, HOW ARE WE DOING?

By Tom Metzler, OEM Division Director

You are sitting in your home, you smell smoke, run into your kitchen to find it ablaze! You exit your home and dial 9-1-1. Within five minutes fifteen firefighters show up but they don't have a fire truck to fight the fire. Would you be disappointed with their response? How would you feel if you called for an ambulance for a family member with a neck injury and the ambulance didn't have the equipment to properly stabilize their neck? Would you be disappointed with their response? Recently CERT members were requested to assist at an event. Seven CERT members answered the call for assistance and make no mistake about it I appreciate your volunteer service. However, of the seven who attended; one came with children, two had no gear and two arrived at the conclusion of the event. We need to start thinking and acting like first responders.

I hope each of you have noticed and have had an opportunity to participate in the many training programs that have been offered in the past few months, and you have my assurance that quality training will continue as we move forward. Additionally, an exercise is being planned for the fall where our CERT teams will be able to work together in realistic rescue and recovery situations. So let me get to the point and tell each of you what is expected when you are called for an activation and/or an assistance call.

1. What you should bring and wear when attending training, exercises and events:

Your CERT Equipment Bag—Don't leave home without it! Please wear pants or jeans. In the interest of personal safety shorts, open toe shoes and tank tops are discouraged. Why, you may be asking? You never know when a routine detail could become an extraordinary detail where inappropriate dress may limit your ability or jeopardize your personal safety.

2. Please arrive on time: Going back to the detail mentioned earlier, only three of the seven CERT members participating that day arrived at the instructed time with two members arriving just as the event was ending. OEM assumes some responsibility for this as does some of the local CERT coordinators. In the future, our newsletter, training bulletins and requests for members to assist or deploy will be time specific.

3. General behaviors when assisting at an exercise: Please be patient before, during and after an exercise event. The schedule does not always keep true as tasks change and assignments evolve. If CERT has been called to assist, remember we are guests of the host organization. When food is provided it is intended for all the emergency agencies; CERT, fire, police, EMS, etc. Under no circumstance should food be removed from the exercise site!

Please remember my motto, "As a CERT member you may not be able to perform every task but there is a task that every CERT member can perform."

I have taken this space in your newsletter this month to discuss this matter because I believe that working together we can make CERT a professional, well trained, well equipped and reliable service that will be recognized by the first responded community as a viable resource during time of emergency and disaster. In closing, please let me share this very positive assessment of CERT during a recent exercise. **"There were some shining moments and commendable jobs done at the event. CERT members took control of check-in with minimal supervision and used radio skills very well. CERT members interacted with command to address staging and transportation issues which was a crucial assignment. Overall the [CERT] assignment was completed very well"**

SPECIAL NOTICE:
CERT MUNICIPAL COORDINATORS.
MEETING WILL BE HELD ON
THURSDAY, OCTOBER 1, 2015 AT 7:30pm IN THE EOC.
PLEASE MARK YOUR CALENDAR!

INSIDE THIS ISSUE

CERT Trailers	2
Mutual Aid Database	2
Wyckoff Day	3
Franklin Lakes CERT	4

Franklin Lakes & North Arlington Cert To Receive Cert Trailers

New Jersey Emergency Management and the New Jersey Citizen Corps Program, as part of their continuing program to offer CERT trailers to local CERT Teams, recently accepted applications and recommendation for the next round of CERT Trailer deployments. Currently CERT trailers have been issued to Fair Lawn/Paramus, the Medical Reserve Corps (MRC), Mahwah, Ho-Ho-Kus, River Vale, Waldwick and two trailers to Bergen County. Seven Bergen County CERT Teams submitted applications to be considered for a new trailer for their team.

Each trailer application was judged utilizing a point system that acknowledged membership, new members, training, meetings, deployment/activations and awards and recognitions. Extra points for training were given to smaller teams to make the judging fair for all teams involved. Application review was performed by Mahwah CERT Leader Allan Becker, HoHoKus CERT Leader Stan Kober and OEM Executive Assistant Evelyn Powell. After scoring the applications a list was developed and forwarded to BCOEM Director Tom Metzler who forwarded the list to the state OEM. The top two teams were Franklin Lakes CERT and North Arlington CERT.

This year New Jersey Emergency Management and the New Jersey Citizen Corps had four CERT trailers to distribute statewide. Two of the trailers will be coming to Bergen County. Congratulations to Franklin Lakes CERT and North Arlington CERT on being selected to receive new trailers this year. Job well done!

Bergen County CERT Team Mutual Aid Database

By Allan Becker, Mahwah CERT Coordinator

In the event that a major disaster takes place in another municipality and additional resources are needed, it is imperative to know what CERT assets are available. For that reason I am proposing that we formalize a mutual aid plan and equipment inventory similar to what is currently in place with the fire departments across the State of New Jersey and in Bergen County.

The primary function of the plan is to know how many active CERT team members are available in each municipality and what type of equipment they can provide. When the various CERT teams in Bergen County were granted a trailer, one of the stipulations was that “they are willing to and capable of deploying outside their immediate community/municipality if requested elsewhere in your county by the County OEM Coordinator”. Also, “your team must be willing and capable of deploying elsewhere in the State of New Jersey if requested to deploy by NJOEM”

It is critical to know what equipment and supplies were added to your trailer in addition to what was provided by the state. When a call for mutual aid is requested, the incident commander might be looking for specific equipment which might not be available in a neighboring municipality’s trailer so knowing what is available in other municipalities trailers is critical. BCOEM can request a specific CERT team for assistance based upon the information in your responses to this request and not deploy teams and special equipment that may be needed in other areas.



As of today, there were 9 CERT trailers granted to municipalities in Bergen County. Two went to Bergen County OEM, one went to Bergen County Medical Reserves and a mobile command trailer went to Ho-Ho-Kus. The other trailers went to: Lyndhurst, Mahwah, Paramus, River Vale and Waldwick.

Celebrating Community:

Wyckoff CERT Lends Support to the YMCA Wyckoff Day

By Helene Porceloranca, CERT Wyckoff Day Coordinator

For the past six years, the Wyckoff CERT Team has participated in the Wyckoff YMCA Annual Wyckoff Day. Wyckoff Day is a wonderful community event in which the local businesses, civic groups, non-profits, individuals and families are invited to participate as vendors, sponsors, and volunteers. It is a day that celebrates our volunteer spirit, focuses on the contributions of our citizens and gives an opportunity to feature all the businesses and organizations that support our community.

In 2010, the Wyckoff CERT Team was asked to help at this event by providing Traffic Control for the morning of Wyckoff Day as the vendors and various organizations arrived at the YMCA to set up. In the subsequent years that followed, besides our support with Traffic Control at the event, we decided to host our own table as part of the OEM and our local emergency services: Police, Fire and Ambulance Corps.

Wyckoff Day allows us to connect with the people in our community on a more personal level to talk about the CERT/CART Programs, emergency preparedness, shelters for people and their pets. We distributed many pamphlets and had examples of different types of Go Bags for your house, car and pets.

This year we were fortunate to bring the Bergen County CERT Trailer to Wyckoff Day. It generated lots of interest and we are hoping that soon Wyckoff CERT will have its very own trailer.

After Wyckoff Day, our CERT Coordinator, Michael Miklas, received this thank you letter from Jennifer Sauer, YMCA Wyckoff Day Coordinator.

“Thanks to the entire Wyckoff CERT Team for all of your support at this year’s Wyckoff Day celebration. Not only did the volunteers help enormously monitoring Spring Meadow Drive’s traffic, but they were also a warm and welcoming presence at the Y entrance to all of the attendees as they entered our campus on foot. The CERT Team always gives us that “added extra” and we think that’s fantastic!

The Wyckoff Family Y Board and Staff are truly appreciative of the many hours the CERT Team donates to us not only on Wyckoff Day, but at many other events throughout the year. Be it our Veteran’s luncheon, or the Buddy Walk (to name a few), Wyckoff CERT has always been an integral part of making the day a success. We look forward to collaborating on many more special events in the future!”

I think Jennifer Sauer’s thank you letter sums up the connection that our CERT Team has with our community. Wyckoff CERT is all about "Neighbors Helping Neighbors" and Wyckoff Day is a time when our community comes together. We are looking forward to many more years of lending our support to this eve.

CERT Current Training Schedule

CERT BASIC Training Class	September 9 - 7:00 pm to 9:30 pm	Mahwah
Shelter Fundamentals Class	September 12 - 9:00 am to 1:00 pm	Fort Lee
Shelter Fundamentals Class	September 16 - 6:00 pm to 10:00 pm	Fort Lee
Advanced First Aid	October 24 - 9:00 am to 4:00 pm	Paramus
Radio Communications II	October 19 - 7:00 pm to 9:30 pm	Ho-Ho-Kus
ICS 200 Class	November TBD	Mahwah

REGISTRATION:

EMAIL: Evelyn Powell at powell@bcoem.org - All classes are offered on a first come, first serve bases.



**Bergen County
Office of Emergency Management**

Thomas Metzler, CEM, Director

Matthew Tiedemann, CEM, Coordinator

Ronald Salzano, CEM Deputy Coordinator

Matthew Ziemkiewicz, CHS, Deputy Coordinator

Barry Leventhal, Training & Operations

Thomas Rose, EMS Coordinator

Evelyn Powell, Executive Assistant

Phone: 201-785-5757

Fax: 201-785-8571

*Does your CERT Team
have a story for a
future issue of
The Civilian Responder?*

*E-mail it to:
metzler@bcoem.org*



Franklin Lakes CERT in Action



Franklin Lakes CERT Members Participating in the POD Exercise

Forty CERT volunteers plus an additional fifty volunteers participated. The Point of Distribution Plan tested the procedures for distributing medications to all residents in the event of an actual pandemic. The goal of the drill was to demonstrate that required distribution could be achieved with the planned POD design, process steps, protocols, staffing levels, and to find areas needing improvement. During the 30 minute simulation the team was able to process 320 cars (equivalent of 2000 meds/hour) and 200 walk-up families (equivalent of 1200 meds/hour). The exercise tested the effectiveness of the POD Plan and identified deficiencies resulting in changes being made to improve the efficiency of the plan.

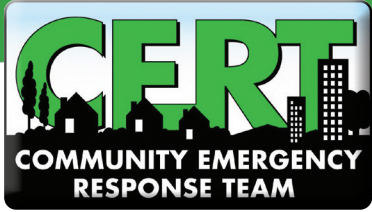


CERT Members at the Memorial Day Parade

Bergen County Office of Emergency Management - CERT

The Civilian Responder

Volume 1, Issue 7 ~ September 2015



CERT Requested for Airport Exercise

The Port Authority of New York and New Jersey has requested your volunteer service to participate in an exercise scenario which will simulate an aircraft accident involving casualties at Newark International Airport. Volunteers will be assigned to simulate witnesses and/or victims at the incident site. The exercise will take place on Saturday, October 17, 2015. While the exercise is scheduled to start at 10AM and end by noon all volunteers will be assigned a specific time to sign in for moulage (fake injury) preparation and attend a 9AM Actor Briefing. All volunteers should be completed by 1PM. All volunteers will receive light snacks/drinks, exercise participation certificates, and a small participation favor. Please wear clothing that you don't mind getting dirty and dress appropriately for the weather because you will be outside.

To participate in this exercise you must contact Evelyn Powell at Powell@bcoem.org before 10AM on September 29, 2015. Once your registration is confirmed by the Port Authority you will be contacted with further information. Volunteers will be instructed to meet at a Bergen County location so that we can car pool to the exercise.

Franklin Lakes and North Arlington receive CERT Trailers NJOEM

Members of Franklin Lakes and North Arlington CERT teams traveled to State Police Headquarters in West Trenton on August 26th to receive their well deserved CERT equipment trailers. Franklin Lakes CERT takes a break from an inventory check to pose with their new trailer.



SPECIAL NOTICE:

CERT MUNICIPAL COORDINATORS - MEETING WILL BE HELD ON
THURSDAY, OCTOBER 1, 2015 AT 7:30pm

This meeting will be hosted by Paramus CERT at the James Tedesco Life Safety Complex
1 Jockish Square Paramus, NJ 2nd Floor (Directions will be emailed)
PLEASE MARK YOUR CALENDAR!

INSIDE THIS ISSUE

RACES	2
Class 15-02	2
Training Schedule	3
Event Photo	4
Korean Festival	4

Ho-Ho-Kus CERT / R.A.C.E.S. Radio Club—W2HHK

Written by Stanley A. Kober, (KC2ZXB)

Ho-Ho-Kus CERT Program Manager

and Bergen County Deputy CERT/BC-R.A.C.E.S. Liaison Officer

Craig Fugate, a former FEMA Administrator, has called amateur radio “*The Last Line of Defense*”.

In an effort to prepare ourselves and our community for emergencies, Ho-Ho-Kus, New Jersey, one of several municipalities in Bergen County who has an active CERT / R.A.C.E.S. organization, has established a CERT / R.A.C.E.S. radio club, call sign **W2HHK**, with the primary purpose to support the Ho-Ho-Kus Office of Emergency Management. This support encompasses the training of licensed amateur radio operators for the CERT / R.A.C.E.S. emergency communication function and for local, mutual aid, and county / state drills and activations and deployments when necessary.

The Ho-Ho-Kus CERT / R.A.C.E.S. Club provides emergency support communications with trained FCC amateur radio licensed, CERT personnel, when the infrastructure of the public network (telephone, wireless, Internet, etc.) becomes congested or ceases to function. It can establish 2-way radio communication during emergencies between municipalities in at least Bergen County, NJ and establish 2-way radio communications between the Bergen County NJ Office of Emergency Management (OEM) and any other county or NJ State R.A.C.E.S. station. The Club is able to establish communication links with relief agencies (Red Cross, Salvation Army, FEMA, National Weather Bureau, Civil Air Patrol, CERT, and Medical Reserve Corps) and will handle both formal written and tactical messages and establish multi-link radio communications when needed.



The Club's CERT / R.A.C.E.S. operators and station are registered with the Bergen County Office of Emergency Management (BC-OEM) and do not self-deploy, but are activated through the local, county, state, and/or federal Emergency Management Coordinators. Uniformed services (police, fire, ambulance, etc.) work directly with local, County, State, and Federal emergency management teams who activate and direct the operation of the Club's CERT / R.A.C.E.S. personnel. **Emergency Management is a team and CERT / R.A.C.E.S. personnel are part of that team.**

The Ho-Ho-Kus Club's amateur radio personnel are licensed with the FCC and registered through the Bergen County NJ Office of Emergency Management (BC-OEM).

In general, R.A.C.E.S. volunteer radio operators may or may not be CERT qualified, but in Bergen County R.A.C.E.S. all amateur radio operators are preferred to be CERT qualified, and are:

Continued next page

- FCC Licensed Radio Amateurs;
- Certified by a civil defense agency (BC-OEM);
- Permitted to communicate on Amateur Radio frequencies during drills, exercises, and emergencies; and,

Activated by local, county, and state jurisdictions and are the only Amateur Radio operators authorized to transmit during declared emergencies when the President of the United States specifically invokes the War Powers Act.

The Radio Amateur Civil Emergency Service (R.A.C.E.S.) was created by the Federal Emergency Management Agency (FEMA) and the Federal Communications Commission (FCC Part 97, Section 407). The volunteers serve their respective jurisdictions pursuant to guidelines and mandates established by local emergency management officials as based on FCC Part 97, Section 407.

At the County level, Bergen County R.A.C.E.S. (BC-R.A.C.E.S.) was established in 1974 and the current call sign is NJ2BC.

The Bergen County R.A.C.E.S. directed radio nets are conducted the second and fourth Wednesday of every month at 7:45 PM on the 146.7900 Repeater, PL 141.3, which is owned and operated by the Bergen County FM Association (BCFMA). The Net Control is **NJ2BC** which is operated under the auspices of the Bergen County Office of Emergency Management in Mahwah, NJ and through equipment in the BC- R.A.C.E.S. radio room in the County Police Headquarters in Paramus, NJ. BC-R.A.C.E.S. members at the County level gather for in-person meetings several times during the year at different locations throughout the County.

If you want to become a part of this important Bergen County emergency service organization of volunteers, send an e-mail to BCRACES@BCOEM.ORG with your name, amateur radio call sign, and municipality.

Those CERT or amateur radio operators who live in Ho-Ho-Kus are encouraged to contact Stanley A. Kober, (KC2ZXB), Ho-Ho-Kus CERT Program Manager, at hkhcert@ho-ho-kuscert.org to get information on becoming a licensed radio operator and/or becoming CERT trained.

CERT Class 15-02 Underway.....

Basic CERT Class 15-02 kicked off on Wednesday , September 9th with sixty-two raw CERT recruits. This is the first CERT class to be offered reformatted with expanded practical training in first aid and light rescue. Additionally, an end of class exercise will be offered to class members to practice and test the new skills that they will learn. The communities of Allendale, Carlstadt, Emerson, Englewood, Fair Lawn, Fort Lee, Franklin Lakes, Garfield, Hackensack, Lodi, Mahwah, Montvale, New Milford, Oakland, Ridgely Park, Tenafly, Waldwick, Washington Township and West New York are represented in the class.

CERT Current Training Schedule

Coordinators Meeting	October 1st	7 pm	Paramus
Advanced First Aid	October 24th	9 am to 4 pm	Paramus
Radio Communications II	October 19th	7 pm to 9:30 pm	Ho-Ho-Kus
ICS 200 Class	November TBD		Mahwah
Medication Distribution (POD)	December TBD	7 pm to 9:30pm	Mahwah

REGISTRATION:

EMAIL: Evelyn Powell at powell@bcoem.org - All classes are offered on a first come, first serve basis.

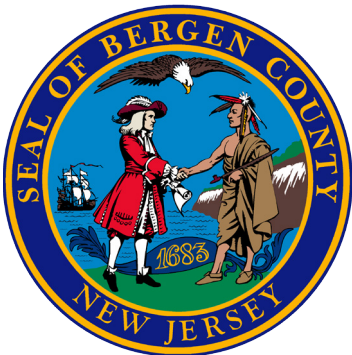


**Bergen County
Office of Emergency Management**

Thomas Metzler, CEM, Director
 Matthew Tiedemann, CEM, Coordinator
 Ronald Salzano, CEM Deputy Coordinator
 Matthew Ziemkiewicz, CHS, Deputy Coordinator

Barry Leventhal, Training & Operations
 Thomas Rose, EMS Coordinator
 Evelyn Powell, Executive Assistant

Phone: 201-785-5757
 Fax: 201-785-8571



Bergen County Executive
 James J. Tedesco III
 Bergen County Freeholders
 Chairwoman Joan Voss
 Vice Chairman Steve Tanelli
 Chairman Pro Tempore John A. Felice
 Maura R. DeNicola
 David L. Ganz
 Thomas J. Sullivan, Jr.
 Tracy Silna Zur

Does your CERT Team have a story for a future issue of The Civilian Responder?

E-mail it to:
metzler@bcoem.org



CERT Members take a moment during a recent EMS exercise

Volunteers Still Needed For Traffic & Crowd Control

CERT volunteers have been requested by the Bergen County Parks Department to assist with traffic and crowd control at the Korean Thanksgiving Festival which is being held on September 26th & 27th at Overpeck Park. The detail has been broken into four shifts as follows: 9/26/15 11:30AM to 5:30PM & 4:30PM to 10:30PM. On September 27th the first shift is 11:30AM to 4:30PM and 3:30PM to 7:30PM. Special thanks to shift supervisors Allan Becker (Mahwah), Stan Kober (HoHoKus), Neil Shore (Fair Lawn) and Craig Hartless (Little Ferry).

The request was for sixteen volunteers per shift. Currently, we have on average six per shift. If you are available, please consider volunteering. These events are an excellent opportunity to meet members from other teams and to apply some of your CERT training. If you are available please contact Evelyn Powell at: Powell@bcoem.org



River Vale CERT members maintain a safety zone for the United Water Half Marathon held on September 13th

Bergen County Office of Emergency Management - CERT The Civilian Responder

Volume 1, Issue 8 ~ October 2015



Fourteen Year Old CERT Member Injured Directing Traffic—NOT!

By now you probably have read the Bergen Record story about the fourteen year old female CERT member that was injured directing traffic at the Korean Festival when a driver drove over her foot on September 26th. This probably confused some of you because a person must be sixteen to participate in the CERT program and our policy is that Teen CERT or for that matter adults lacking the proper traffic training are not permitted to assist with traffic type details.

After investigating the facts surrounding the injured party it has been determined that she is not a CERT member, nor was she the child of a CERT member. It appears the fourteen year old was assigned to the traffic post by the festival committee. According to the Record report the injuries were minor and the child left the event with her grandmother. The Bergen Record corrected their reporting the next day.

Long Time HoHoKus CERT Coordinator Stanley Kober to Stepdown

After eleven years as the coordinator of the HoHoKus CERT program Stanley Kober is hanging up his green vest, well sort of! Stan was first asked in 2004 by OEM Coordinator Jay Ludwig and Police Chief Kallenberg to consider starting a CERT program in the Borough of HoHoKus. To Stan, "It just sounded like a great opportunity to serve the community in a special way.

In advising his fellow team members of his decision to step down, Stan wrote the following: I can honestly say that it has been a rewarding, educational, and exciting experience, although frustrating at times, and one I will never forget. I have been pleased and honored to work side-by-side in work days, activations, drills exercises, tabletops, etc., with some of you very supportive and dedicated volunteers without whose support our volunteer Ho-Ho-Kus CERT organization never would have gotten to be one of the most recognized, awarded and active in at least Bergen County.

Stan Kober's resignation takes effect November 1st. He intends to continue as a member of the Ho-Ho-Kus CERT Program. Speaking on behalf of all the volunteers involved in CERT throughout the county we wish him best wishes and offer our congratulations on a job well done!

INSIDE THIS ISSUE

Korean Festival	2
Ho-Ho-Kus 5K Run	2
CERT ID Cards	3
Airport Exercise	3
Allendale Festival	4

CERT Assists at Korean Festival

Twenty CERT members from nine different teams assisted with traffic and crowd control at the Korean Festival held in Overpeck Park on September 26th and 27th. The group divided into four shifts over the two days were supervised by Allen Becker of Mahwah, Stan Kober of Ho-Ho-Kus, Neil Shore of Fair Lawn and Craig Hartless of Little Ferry.



HO-HO-KUS CERT assists 5k Run



Members of the Ho-Ho-Kus CERT Team assisted with traffic and pedestrian control at the Annual 5k Richard's Run in Ho-Ho-Kus on October 4th. Pictured in the first row is Patty Nazzaro, Mike Limatola, Sue Veerling-Steinhoff. In the middle row is Jill Bristow, Cindy Tharayil, Asha Unnikrishnan and Richard Jamieson. In the top row is Bing Guo, Stefan Deppisch, Stan Kober, Joe Stewart and Jim Schwartz.

NEW CERT ID Card Schedule Announced

Bergen County Emergency Management has announced new hours for emergency volunteers and CERT members to process identification cards. Effective October 1st county OEM will process identification cards on Thursdays from 9am to noon, 1pm to 3pm and 4pm to 8pm. No appointment is necessary however CERT members are encouraged to contact Meredith Martin at 201-785-5750 or martin@bcoem.org in advance to confirm that an identification application has been completed and placed in the database.

CERT to Participate in Airport Exercise

The Port Authority of New York and New Jersey has approved the CERT members who volunteered to participate in an exercise scenario which will simulate an aircraft accident involving casualties at Newark International airport. Volunteers will be assigned to simulate witnesses and/or victims at the incident site. The exercise will take place on Saturday, October 17, 2015. While the exercise is scheduled to start at 10AM and end by noon all volunteers will be assigned a specific time to sign in for moulage (fake injury) preparation and attend a 9AM Actor Briefing. All volunteers should be completed by 1PM. All volunteers will receive light snacks/drinks, exercise participation certificates, and a small participation favor. Please wear clothing that you don't mind getting dirty and dress appropriately for the weather because you will be outside.

As soon as Bergen County Emergency Management is notified where our CERT volunteers are to report, they will be contacted and provided all necessary information.

MARK YOUR CALENDAR
50TH ANNIVERSARY PUBLIC SAFETY EXPO
SATURDAY, OCTOBER 17TH 10AM—4PM
RAIN DATE THE 18TH
281 Campgaw Road, Mahwah
Don't miss it.....

CERT Current Training Schedule

Advanced First Aid	October 24th	9AM to 4PM	Paramus
Radio Communication II	October 19th	7PM to 9:30PM	Ho-Ho-Kus
ICS 200 Class	November 2,9,16,23		Mahwah
	(Attendance all four nights required)		

REGISTRATION:

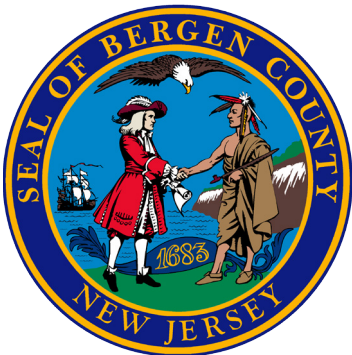
EMAIL: Evelyn Powell at powell@bcoem.org - All classes are offered on a first come, first serve basis.



**Bergen County
Office of Emergency Management**

Thomas Metzler, CEM, Director
Matthew Tiedemann, CEM, Coordinator
Ronald Salzano, CEM Deputy Coordinator
Matthew Ziemkiewicz, CHS, Deputy Coordinator
Barry Leventhal, Training & Operations
Thomas Rose, EMS Coordinator
Evelyn Powell, Executive Assistant

Phone: 201-785-5757
Fax: 201-785-8571



Bergen County Executive
James J. Tedesco III
Bergen County Freeholders
Chairwoman Joan Voss
Vice Chairman Steve Tanelli
Chairman Pro Tempore John A. Felice
Maura R. DeNicola
David L. Ganz
Thomas J. Sullivan, Jr.
Tracy Silna Zur

Does your CERT Team have a story for a future issue of The Civilian Responder?

E-mail it to:
metzler@bcoem.org



ALLENDALE CERT GETTING THE MESSAGE OUT

Allendale CERT braved cold temperatures and rainy skies to support Allendale

Festival Day on Saturday October 3rd. CERT members handed out FEMA

Information on how to prepare your community, your family and your pets during time of emergency. Considering a hurricane was off the coast the information was well received by the community.



Bergen County OEM has purchased 250 helmet and/or head mounted LED lights to be distributed to key CERT Teams. All CERT Teams will receive a few lights. Teams with specific training requiring the equipment will receive the bulk of the units. If you are a CERT team located in the northern section of the county, interested in receiving special training on the Western Shelter system please have your CERT coordinator contact Tom Metzler at Metzler@bcoem.org

**HAPPY
HALLOWEEN
FROM OUR
HOUSE
TO YOURS**



Bergen County Office of Emergency Management - CERT

The Civilian Responder

Volume 1, Issue 9 ~ November 2015



CERT Participates in Newark Airport Exercise

On a sunny, brisk Saturday in October, the Bergen County CERT joined with other CERT teams from Hoboken, Stevens Institute of Technology and Woodbridge CERT to support the activities of the Port Authority of New York and New Jersey's Full-Scale Exercise (FSE) at Newark International Airport (EWR). Our CERT members served as volunteer victims in an exercise scenario to simulate an airplane crash involving numerous casualties.

The day started with check-in, with each CERT volunteer receiving a white T-shirt, and an identity card.

The identity card had the name, gender and age of a simulated victim, with symptomology of various wounds. Some of us had open head wounds, neck injuries, open bleeding, and imbedded fragments of glass. After check-in, it was onto coffee, a continental breakfast, and into moulage. Moulage is an art using waxes, dyes and makeup to simulate the wound on our symptomology card. Some of us looked quite gory! Then, after some briefing from our Control Staff leader, and safety tips including when to use the safety word "dodgeball", we boarded buses for the crash site.

Half of us were assigned to groups inside the plane, while others were outside on the tarmac, littered with a few dummies of already fallen victims. The exercise commenced with smoke canisters. Those victims inside the aircraft had to deal with a pitch black environment filled with smoke. Those outside the aircraft were likewise exposed to smoke, and lying on the ground with firetrucks and emergency vehicles driving within feet of our immobilized bodies. We were triaged and tagged by fire fighters or police. Then we waited for Emergency Medical Technicians (EMT) to attend to us. It is an education in CERT training even to be a victim. Because in this situation, when one is immobilized and in extreme pain, minutes seem like hours.

Continued page 3



INSIDE THIS ISSUE

Hospital Exercise	2
Newark Exercise	3
CERT Class 15-02	3
Training Schedule	3
Public Safety Expo	4

CERT Participates in Valley Hospital Active Shooter Exercise

The Valley Hospital in Ridgewood, NJ, conducted its second annual multi-agency, multi-jurisdictional A.L.I.C.E. (www.alicetraining.com) drill on its premises on Thursday, October 22, 2015, starting at 8:00 a.m. The A.L.I.C.E. training basically informs, instructs, and prepares individuals on how to respond and react if / when they find themselves in an active shooter or violent intruder incident.

Participants included Valley Hospital staff (doctors, nurses, security, and administrative staff), Bergen County and Ridgewood Village Law Enforcement with other municipal agencies and organizations. The Ho-Ho-Kus CERT (Community Emergency Response Team) was asked to be the lead CERT agency in the drill, because Stanley Kober, Ho-Ho-Kus CERT Program Manager, recently became certified as an official A.L.I.C.E. instructor at a seminar sponsored by Valley Hospital.

Daniel Coss, Valley Hospital Director of Security, Public Safety and Emergency Preparedness, asked Kober for 20-30 Ho-Ho-Kus CERT members to fulfill the requirement for perimeter guards and to evacuate role player personnel. In addition to the CERT participants who came from Ho-Ho-Kus (12) others from Allendale (3); Glen Rock (1); Mahwah (10); River Vale (5); Saddle River (1); and Waldwick (3), volunteered over three and one-half hours of their time on a work day and applied some of their training received in the Basic CERT course, FEMA leadership courses, and in-service classes conducted after the Basic CERT course. See the photo for those attending the exercise.

The drill was an extremely valuable tool for the Village of Ridgewood Police Department, County, other municipal agencies, Valley Hospital personnel, patients, and visitors, as well as another very important learning experience for the Ho-Ho-Kus CERT team and all the CERT participants from other municipalities.



Members of Mahwah CERT take a “time out” for a quick photo at the Valley Hospital Active Shooter Exercise.

Newark Airport Exercise—continued from page 1

The EMTs did all the heavy lifting, literally! Many of us were required to be hoisted onto stretchers, and loaded onto ambulances. Some of us had EMTs from Roselle Park, and they do tremendous work. The ambulances returned us back to the check-in site where the exercise was declared over, and our bandages and restraints were removed. One of our group members informed us that her character died in the ambulance, but the entire Bergen County Team made it back safe and sound, and enjoyed the sandwich/buffet lunch provided by the Port Authority. On the way out the door we received a certificate for participation, and a gift bag with a few handy items to add into our CERT “go-bag”.

Participating in the exercise were Sharysse Frasco and Kevin Montanye of Allendale, Dan Mikulsky of Dumont, Pauline Shapira and Nelson Winokur of Franklin Lakes, Sue Veerling-Steinhofr of Ho-Ho-Kus and Janee Flynn, Alison Lebow, Dawn Moylan and Janine Vorhees of Ridgefield Park. We all enjoyed our role in the exercise. Come out and join us next year!



CERT Class 15-02 to Graduate December 2nd

CERT class 15-02 has announced that NYPD Sgt. Steven McDonald will be the keynote speaker at their graduation program scheduled for December 2, 2015. On the afternoon of July 12, 1986 then NYPD Officer Steven McDonald entered Central Park where he was shot three times by a 15 year old. The second shot to his throat severed his spine leaving him paralyzed from the neck down. In spite of this life changing experience Sgt. McDonald forgave his assailant and is looking forward to sharing his experience and message with members of Bergen County CERT Class 15-02.

CERT Current Training Schedule

ICS 200 Class	November 2,9,16,23	7PM to 10PM	Mahwah
Class 15-02 Graduation	December 2, 2015	7PM	Mahwah
CERT Coordinators Meeting	January 7, 2016	7PM	Mahwah

REGISTRATION:

EMAIL: Evelyn Powell at powell@bcoem.org - All classes are offered on a first come, first serve basis.

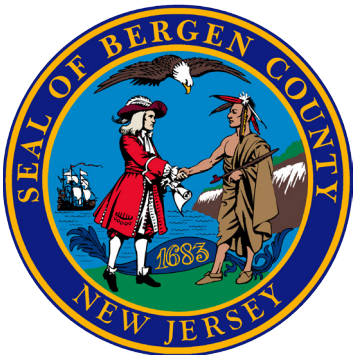


**Bergen County
Office of Emergency Management**

Thomas Metzler, CEM, Director
Matthew Tiedemann, CEM, Coordinator
Ronald Salzano, CEM Deputy Coordinator
Matthew Ziemkiewicz, CHS, Deputy Coordinator

Meredith Martin, Planning
Barry Leventhal, Training & Operations
Thomas Rose, EMS Coordinator
Evelyn Powell, Executive Assistant

Phone: 201-785-5757
Fax: 201-785-8571



Bergen County Executive
James J. Tedesco III

Bergen County Freeholders
Chairwoman Joan Voss
Vice Chairman Steve Tanelli
Chairman Pro Tempore John A. Felice
Maura R. DeNicola
David L. Ganz
Thomas J. Sullivan, Jr.
Tracy Silna Zur

*Does your CERT Team have a story for a
future issue of
The Civilian Responder?*

*E-mail it to:
metzler@bcoem.org*



Mahwah CERT Participates in Public Safety Expo on October 17th



Thank you North Arlington and Mahwah CERT for volunteering to train and become our Western Shelter Deployment Team!

**Coming in 2016...
BACK BY POPULAR DEMAND!**

- Advanced First Aid—Practical
- CPR Certification
- CPR Re-Certification
- Shelter Management
- Light Search & Rescue—Practical
- CERT Day
- ICS 200
- ICS 300
- Firefighting-Practical

The Civilian Responder

Volume 1, Issue 10 ~ December 2015



Season's Greetings



Front Row: OEM Coordinator Matt Tiedemann, Deputy Coordinator Matt Ziemkiewicz

Second Row: Division Director Tom Metzler, Planner Meredith Martin, EMS Coordinator Tom Rose

Third Row: Deputy Coordinator Ron Salzano, Operations Officer Barry Leventhal and Executive Assistant Evelyn Powell

Coming in 2016...

BACK BY POPULAR DEMAND!

- ◇ Advanced First Aid—Practical
- ◇ CPR Certification
- ◇ CPR Re-Certification
- ◇ Shelter Management
- ◇ Light Search & Rescue—Practical
- ◇ CERT Day
- ◇ ICS 200
- ◇ ICS 300
- ◇ Firefighting-Practical



INSIDE THIS ISSUE

Year in Review	2
Year in Review	3
Year in Review	4
CERT Class 16-01	4

BERGEN COUNTY CERT 2015: The year in review.....

2015 was a year of change for the men and women of the Bergen County Municipal CERT Teams. Former CERT Director Gidget Petry was promoted to sergeant the previous October and was transferred out of emergency management and into the patrol division. Deputy OEM Coordinator Tom Metzler was assigned CERT Director effective February 1st. Tom, after meeting with the municipal coordinators, indicated his desire to get back to basics with monthly training sessions and to improve communications with the municipal CERT teams through a monthly news letter. The first edition of "*The Civilian Responder*" was electronically distributed to the membership on March 15th. The first issue included a tribute to former Director Petry, and featured the Rochelle Park CERT Team. Keeping true to his word to provide monthly training opportunities training was offered to the CERT membership in Shelter Fundamentals and ninety members participated in the training.



On April 10th we graduated Basic CERT Class 15-01. Twenty-eight new recruits joined teams in Franklin Lakes, HoHoKus, Montvale, Oakland, Ramsey, Waldwick, Washington Township, Westwood, Wyckoff and Upper Saddle River. A policy change separated the CERT and CART programs and the training was expanded for future CERT classes to include a full class of first aid practical training and a final exercise. In April training was offered to our membership in CPR, CPR Recertification and Traffic & Crowd Control. HoHoKus CERT was our featured Team.

In May Fair Lawn CERT assumed the featured position in the newsletter which also included pictures from Ridgewood CERT sharing information on Earth Day. Training was offered to our membership in Radio Communications and Terrorism Awareness. A membership survey was offered and immediately revealed that the majority of our membership has never been issued ID cards. Several dates were offered and over 300 CERT ID cards were issued.



The June issue of "*The Civilian Responder*" featured stories about River Vale CERT who conducted a Bio-Hazard POD drill and Wyckoff CERT who played a major roll in their community's Memorial Day activities. Weekday and Saturday sessions were offered in firefighting fundamentals to our membership and we still had an opportunity to participate in the electronic survey.

Our featured CERT team for July was Cliffside Park who had played a major roll at the Edgewater Fire in November of 2014. The results of our survey was released in the newsletter. Overall, of those CERT members participating, on average 40% had participated in continuing education opportunities offered, with 50% trained in shelter fundamentals.



The year in review.....continued

69% of respondents rated the Quality of Leadership at the local level as excellent, while 48% rated the Overall Quality of the CERT program as excellent.. Waldwick CERT provided information on their participation in the Chamber of Commerce 5K run.



In August OEM Director Tom Metzler asked the question, "SO, HOW ARE WE DOING?" In doing so he addressed items such as what to bring and what we should wear when attending training, exercises and events, the need to arrive on time and general accepted behaviors when assisting at an exercise. Franklin Lakes CERT had forty members who participated in a Point of Distribution exercise. During the 30 minute exercise CERT members were able to process 320 cars and 200 walk up families.

Members of North Arlington CERT and Franklin Lakes CERT received their CERT trailers from NJOEM.



Members of North Arlington CERT and Franklin Lakes CERT received their CERT trailers from NJOEM.

In September the HoHoKus CERT/RACES Radio Club introduced us to the Radio Amateur Civil Emergency Service the "Last Line of Defense." A new class of CERT recruits began their training in Basic CERT Class #15-02 and a second round of Shelter Fundamentals training was offered by Fort Lee CERT. River Vale CERT provided pictures of their participation in the United Water half marathon. Nine different CERT teams assisted with crowd and traffic control at the Korean Festival in Overpeck Park on September 27th. OEM distributed 500 individual first aid kits to the municipal CERT teams.



October found Allendale CERT braving the cool fall breeze, actually it was rainy and cold, at the Allendale Festival on the 3rd. The next day



HoHoKus CERT assisted with crowd and traffic control at the Annual 5K Richard's Run. Mahwah CERT represented the CERT Program at the Public Safety Expo on the 17th. Continuing education was offered to our membership in Advanced First Aid and Advanced Radio Communications. OEM distributed 250 head mounter LED lights and announced permanent evening hours for CERT members needing ID cards.

Bergen County CERT team members participated in a Port Authority plane crash exercise at Newark Airport. CERT members served as victims in a crash scenario involving numerous casualties. Additionally, CERT members from seven different teams participated in an active shooter exercise at the Valley Hospital on October 22nd assisting with perimeter security.



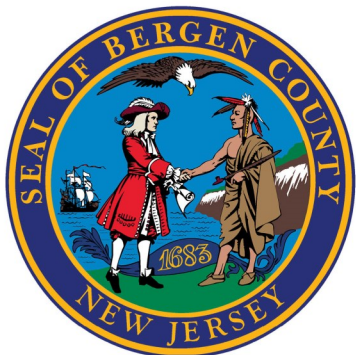
Bergen County Office of Emergency Management

Thomas Metzler, CEM, Director
 Matthew Tiedemann, CEM, Coordinator
 Ronald Salzano, CEM Deputy Coordinator
 Matthew Ziemkiewicz, CHS, Deputy Coordinator

Meredith Martin, Planning
 Barry Leventhal, Training & Operations
 Thomas Rose, EMS Coordinator
 Evelyn Powell, Executive Assistant

Phone: 201-785-5757

Fax: 201-785-8571



Bergen County Executive
 James J. Tedesco III

Bergen County Freeholders

Chairwoman Joan Voss

Vice Chairman Steve Tanelli

Chairman Pro Tempore John A. Felice

Maura R. DeNicola

David L. Ganz

Thomas J. Sullivan, Jr.

Tracy Silna Zur

*Does your CERT Team have a story for a
 future issue of
 The Civilian Responder?*

*E-mail it to:
 metzler@bcoem.org*



Members of Numerous CERT Teams participated at the Valley Hospital Active Shooter Exercise

On November 1st, longtime HoHoKus CERT Coordinator Stan Kober stepped down from the position. A four evening training class was offered in ICS 200, Incident Command which brings us here to December, 2015. On December 2nd Basic CERT Class 15-02 graduated with Det. Steven McDonald as the keynote speaker. What an honor that was! You are going to have to wait until the January Issue of ***"The Civilian Responder"*** for full graduation coverage.

So there it is my friends our year in review. What will we be reading about at the conclusion of 2016? Who amongst us is going to step up to become the first CERT Chief, one of our own, elected by the membership to move the program forward.

BASIC CERT Class 16-01 Schedule Announced...

A tentative schedule has been announced for Basic CERT Class 16-01 set to begin on Tuesday evening February 2, 2016 from 7 to 9:30pm in the Hall of Heroes. Classes will be held on every consecutive Tuesday concluding with graduation on Tuesday, April 19, 2016. A full schedule will appear in a future edition of **The Civilian Responder** once dates and instructors have been confirmed. Any CERT member needing to make up a missed class should contact Meredith Martin via email at martin@bcoem.org.

Happy Holidays from my home to yours.....

Thank you for your volunteer service to county & community!

Tom Metzler

